

# **Argument Corpora, and Argument Mining and Analytics**

**Katarzyna Budzynska<sup>1,2</sup>  
& Chris Reed<sup>2,1</sup>**

**Centre for Argument Technology ([www.arg.tech](http://www.arg.tech))**

<sup>1</sup>Institute of Philosophy & Sociology, Polish Academy of Sciences

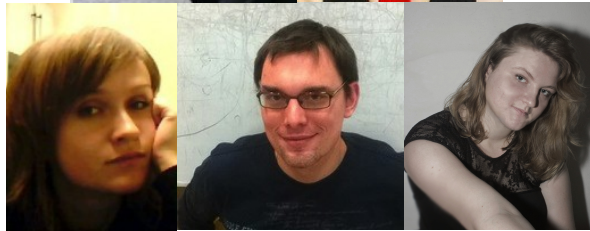
<sup>2</sup>University of Dundee, UK

## ARG-tech (Warsaw & Dundee)



Kasia Budzynska (PL, UK)

Rory Duthie (UK)



Basia Konat (UK, PL)

Marcin Koszowy (PL)

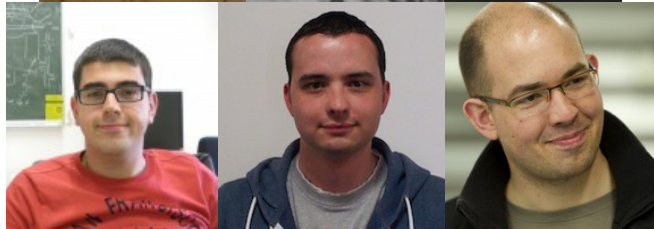
Olena Yaskorska (PL)



Chris Reed (UK, PL)

Mathilde Janier (UK)

John Lawrence (UK)



Martín Pereira Fariña (UK)

Mark Snaith (UK)

Jacky Visser (UK)

# **(2b/4) Complex Argument Structures**

# Linguistic phenomena interwound with arguments

- argumentation schemes (Lawrence & Reed, 2016)
- rephrase relation which paraphrases parts of argument structures (Konat et al., 2016a; Visser et al. 2017)
- illocutionary intentions speakers associate with arguments (Budzynska et al., 2014a)
- protocols of argumentative dialogue games (Yaskorska, 2016; Yaskorska & Janier, 2016; Janier et al. 2015; Snaith & Reed, 2016)
- reported speech
- ethos of arguments' authors (Budzynska 2013; Koszowy & Budzynska 2016; Duthie et al., 2016a)

# Linguistic phenomena interwound with arguments

- **argumentation schemes (Lawrence & Reed, 2016)**
- rephrase relation which paraphrases parts of argument structures (Konat et al., 2016a; Visser et al. 2017)
- illocutionary intentions speakers associate with arguments (Budzynska et al., 2014a)
- protocols of argumentative dialogue games (Yaskorska, 2016; Yaskorska & Janier, 2016; Janier et al. 2015; Snaith & Reed, 2016)
- reported speech
- ethos of arguments' authors (Budzynska 2013; Koszowy & Budzynska 2016; Duthie et al., 2016a)

# (1) Argumentation schemes

## **“Argumentation schemes” Corpus**

- <http://corpora.aifdb.org/schemes>
- 288 ADUs; 127 supports; 32 conflicts

Matthew Taylor: But, hold on. Isn't it simply the case that buying a cup of coffee is something which is substantially less demanding than working up a long-term interest rate? Therefore isn't it a reasonable thing for the state to intervene in those cases, because the knowledge is bounded?

Jamie Whyte: It's only since the state intervened that people have been uninterested in which bank they put their money in. In the old days of early capitalism, bankers were famously prudent people. And they went to great lengths to advertise how prudent they were. This stopped not because of the big bang, which liberalised banking, which is what everybody thinks. It stopped because of government guarantees to depositors.

# (1) Argumentation schemes



Argument Map 1741



## DETAILS

33819

Isn't it simply the case that buying a cup of coffee is something which is substantially less demanding than working up a long-term interest rate?

SUPPORTS: 33820

33820

isn't it a reasonable thing for the state to intervene in those cases

33827

the knowledge is bounded

SUPPORTS: 33820

33836

It's only since the state intervened that people have been uninterested in which bank they put their money in

ATTACKS: 33819

33837

In the old days of early capitalism, bankers were famously prudent people. And they went to great lengths to advertise how prudent they were.

SUPPORTS: 33836

33838

This stopped not because of the big bang, which liberalised banking, which is what everybody thinks.

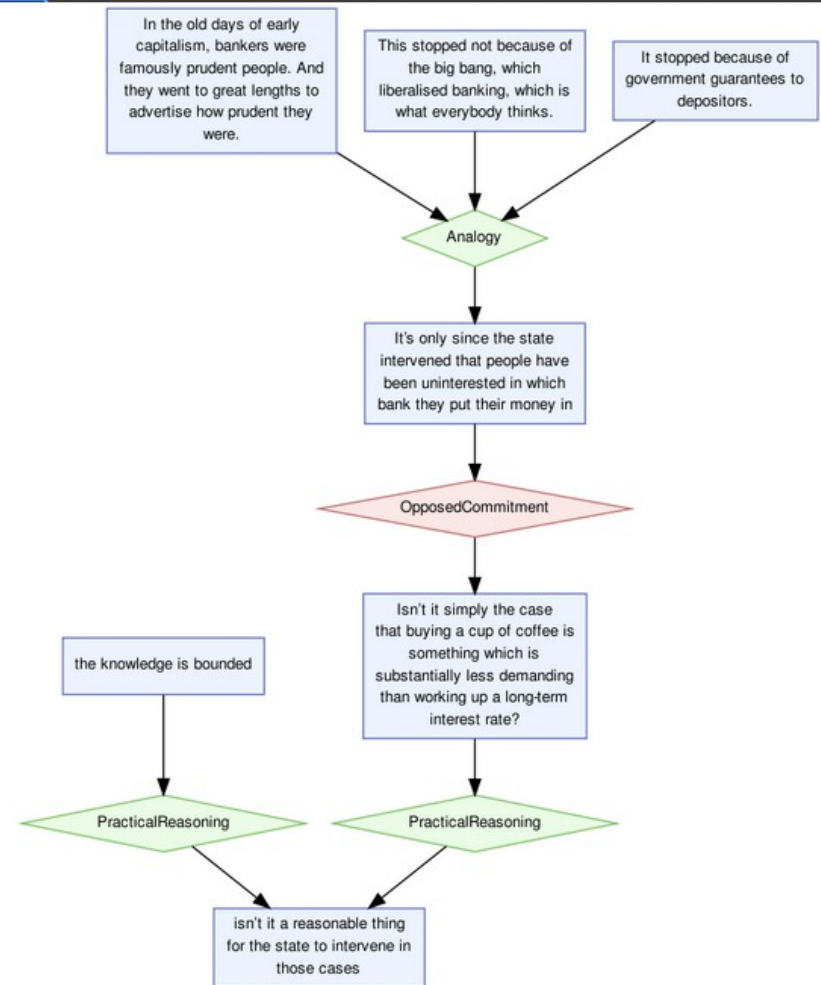
SUPPORTS: 33836

33839

It stopped because of government guarantees to depositors.

SUPPORTS: 33836

## DIAGRAM



# Linguistic phenomena interwound with arguments

- argumentation schemes (Lawrence & Reed, 2016)
- **rephrase relation which paraphrases parts of argument structures (Konat et al., 2016a; Visser et al. 2017)**
- illocutionary intentions speakers associate with arguments (Budzynska et al., 2014a)
- protocols of argumentative dialogue games (Yaskorska, 2016; Yaskorska & Janier, 2016; Janier et al. 2015; Snaith & Reed, 2016)
- reported speech
- ethos of arguments' authors (Budzynska 2013; Koszowy & Budzynska 2016; Duthie et al., 2016a)



## (2) Rephrase

### **“Citizen Dialogue in Public Consultations of US DOT” Corpus** (Konat et al., 2016a)

- <http://arg.tech/cd>
- 1,428 ADUs; 153 supports; 23 conflicts; 88 rephrases

CITIZEN: What impact is that [the road] going to have when it is so close to a house?

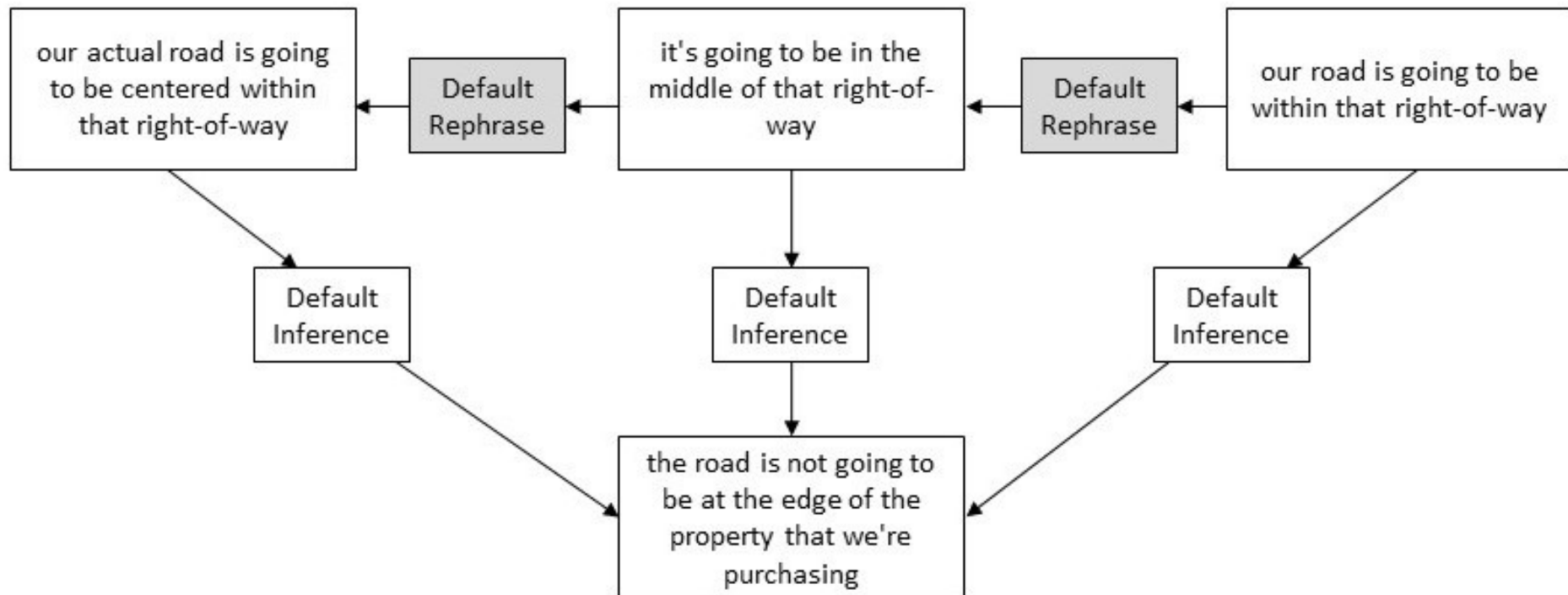
MR. GREG DYER: Yes, ma'am. So the right-of-way limits for the corridor is 250 feet, correct, but our actual road is going to be, you know, centered within that right-of-way. So the road is not going to be at the edge of the prop -- of the property that we're purchasing, it's going to be in the middle of that right-of-way. So we're not going to -- you know, maybe the land that we're purchasing is within ten feet of your property, but our road is going to be, you know, within that right-of-way.

## (2) Rephrase

CITIZEN: What impact is that [the road] going to have when it is so close to a house?

MR. GREG DYER: Yes, ma'am. So the right-of-way limits for the corridor is 250 feet, correct, but our actual road is going to be, you know, centered within that right-of-way. So the road is not going to be at the edge of the prop -- of the property that we're purchasing, it's going to be in the middle of that right-of-way. So we're not going to -- you know, maybe the land that we're purchasing is within ten feet of your property, but our road is going to be, you know, within that right-of-way.

## (2) Rephrase



## (2) Rephrase

- Rephrase and **fallacies** (Visser et al., 2017)
  - relation between rephrases and the fallacies of *straw man* and *ignoratio elenchi*
- Rephrase and **fuzzy** concepts (Pereira Fariña et al., forthcoming)
  - fuzzy modifiers as *lack of commitment* in rephrasing

# Linguistic phenomena interwound with arguments

- argumentation schemes (Lawrence & Reed, 2016)
- rephrase relation which paraphrases parts of argument structures (Konat et al., 2016a; Visser et al. 2017)
- **illocutionary intentions speakers associate with arguments (Budzynska et al., 2014a)**
- protocols of argumentative dialogue games (Yaskorska, 2016; Yaskorska & Janier, 2016; Janier et al. 2015; Snaith & Reed, 2016)
- reported speech
- ethos of arguments' authors (Budzynska 2013; Koszowy & Budzynska 2016; Duthie et al., 2016a)

# (3) Illocutionary intentions

## **“BBC Radio 4 programme *Moral Maze*” Corpus**

- <http://corpora.aifdb.org/mm2012>
- 3,213 ADUs; 869 supports; 215 conflicts; 161 rephrases

Michael Portillo: Isn't that a source of injustice?

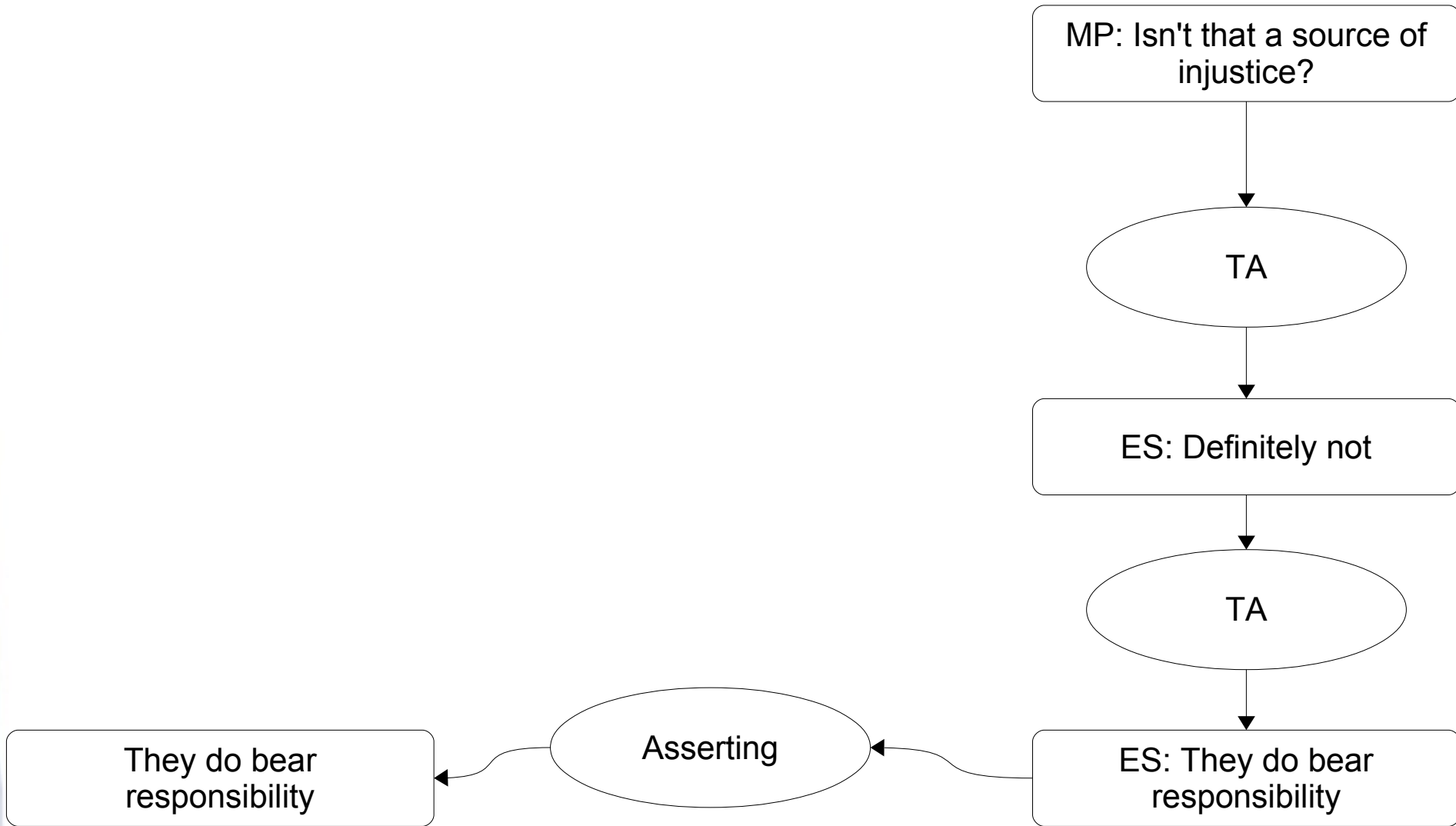
Esther Stanford-Xosei: Definitely not. They do bear responsibility.

# (3) Illocutionary intentions

Michael Portillo: Isn't that a source of injustice?

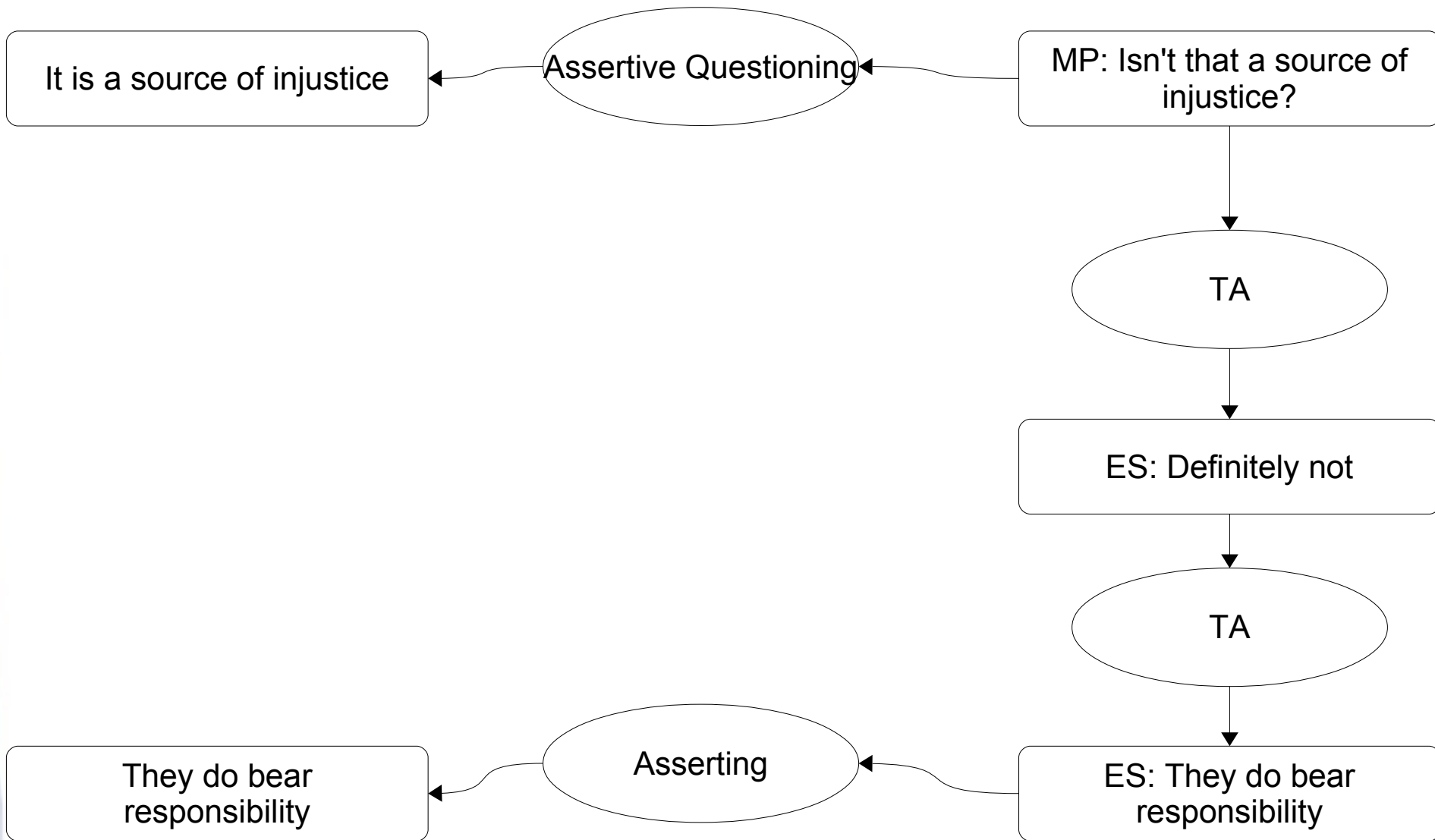
Esther Stanford-Xosei: Definitely not. They do bear responsibility.

# (3) Illocutionary intentions

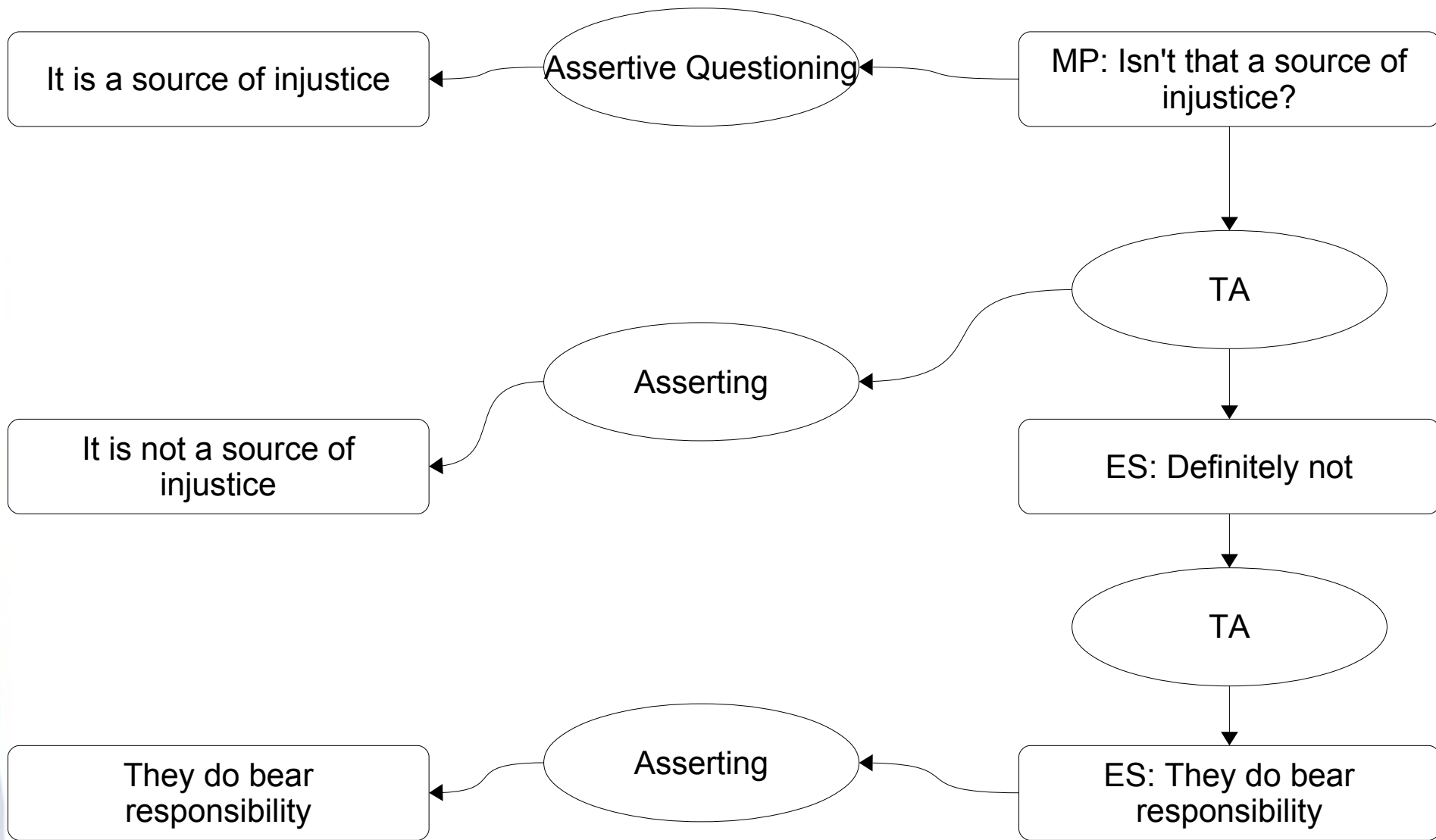




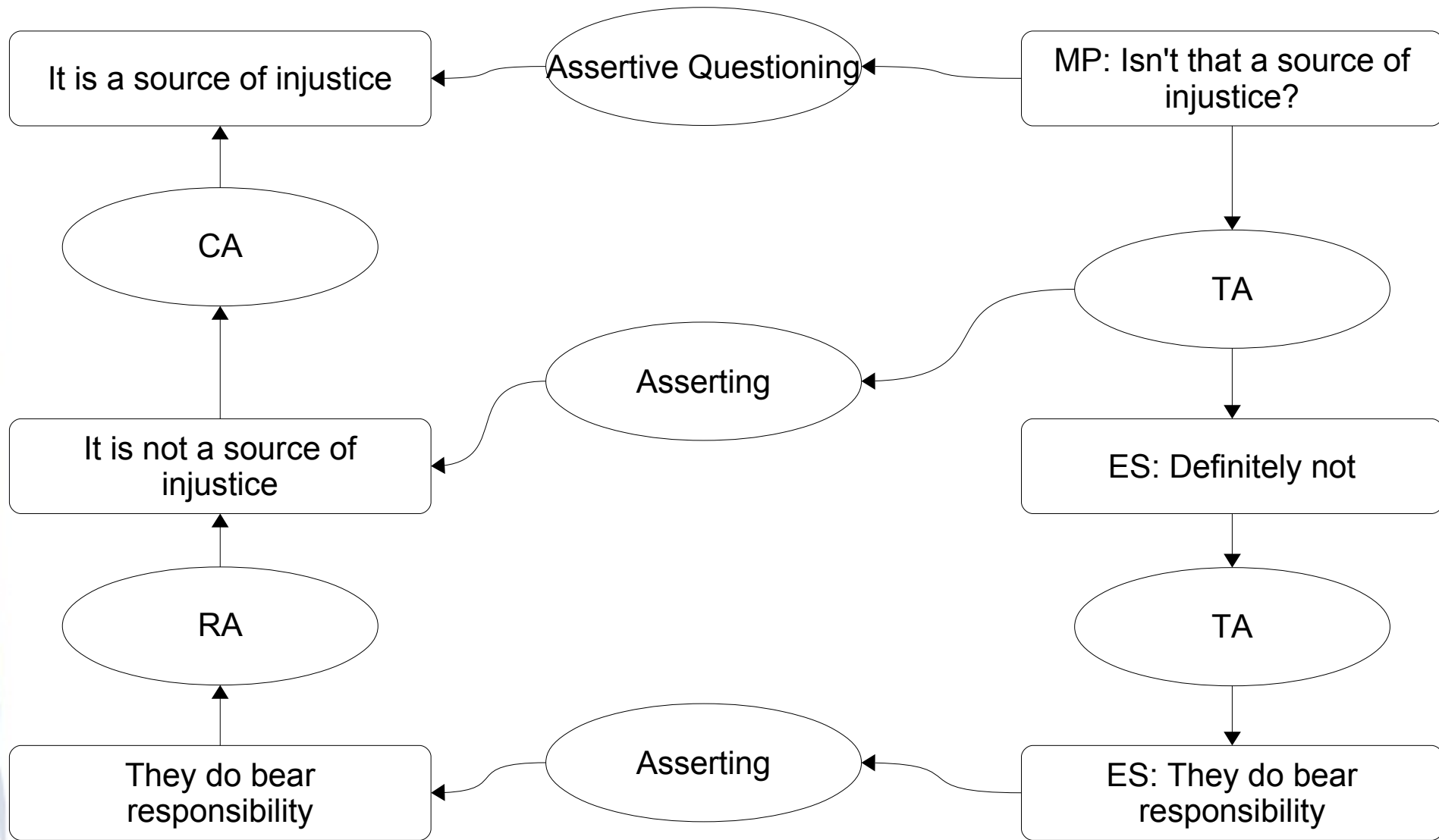
# (3) Illocutionary intentions



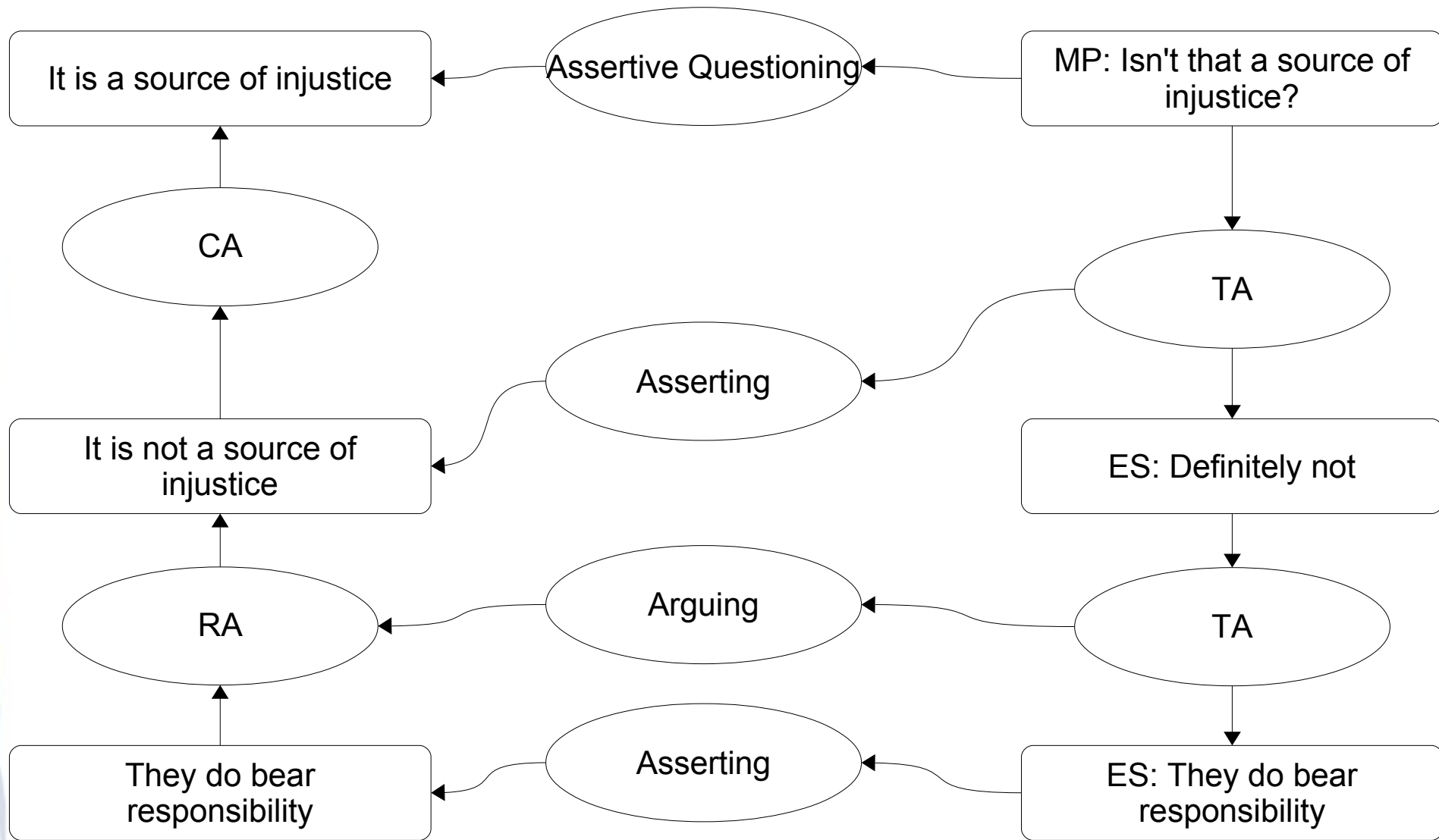
# (3) Illocutionary intentions



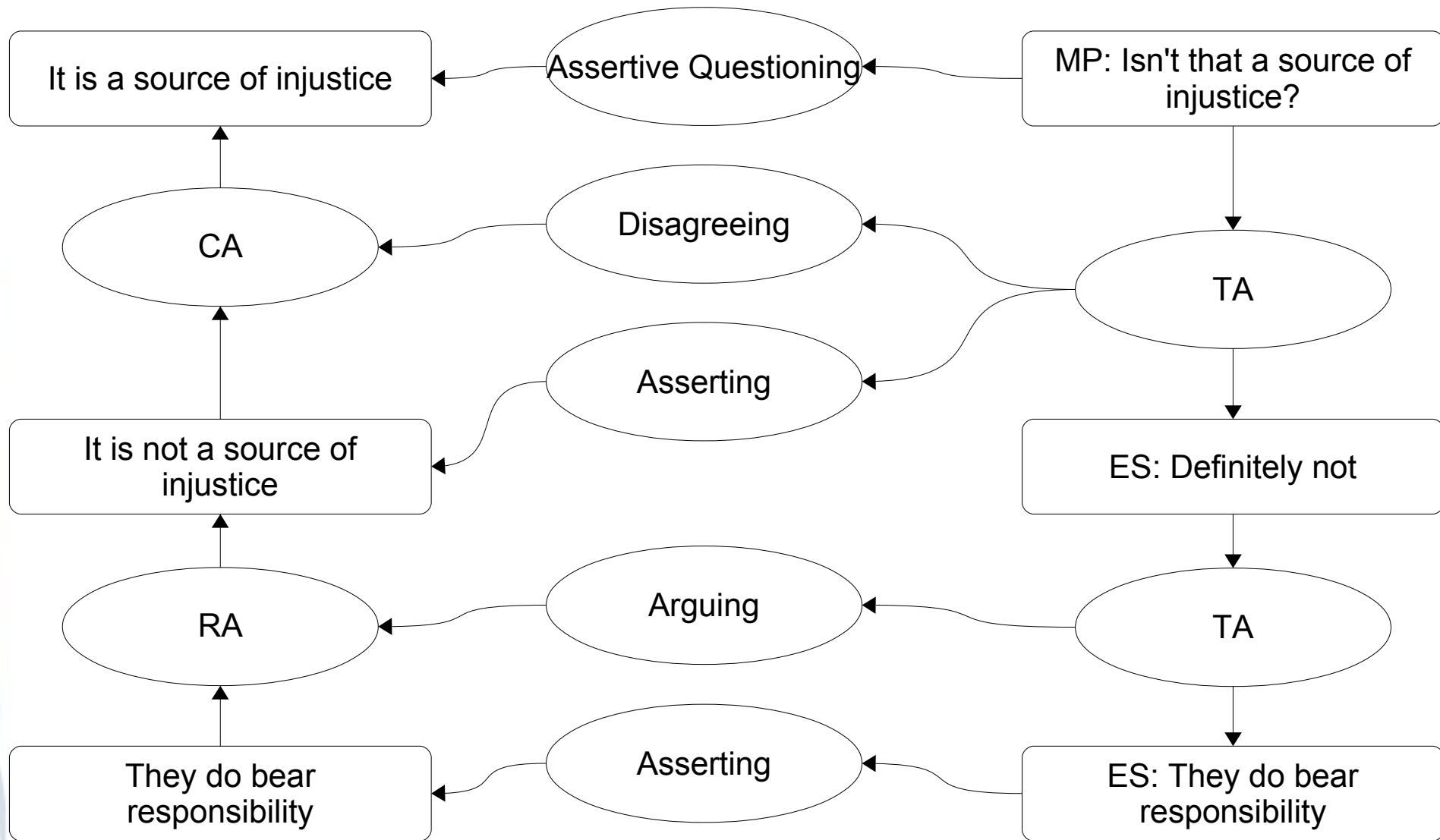
# (3) Illocutionary intentions



# (3) Illocutionary intentions



# (3) Illocutionary intentions



# Linguistic phenomena interwound with arguments

- argumentation schemes (Lawrence & Reed, 2016)
- rephrase relation which paraphrases parts of argument structures (Konat et al., 2016a; Visser et al. 2017)
- illocutionary intentions speakers associate with arguments (Budzynska et al., 2014a)
- **protocols of argumentative dialogue games (Yaskorska, 2016; Yaskorska & Janier, 2016; Janier et al. 2015; Snaith & Reed, 2016)**
- reported speech
- ethos of arguments' authors (Budzynska 2013; Koszowy & Budzynska 2016; Duthie et al., 2016a)

# (4) Protocols of NL dialogue games

**“BBC Radio 4 programme *Moral Maze*” Sub-Corpus**  
(Yaskorska, 2016; Yaskorska & Janier, 2016)

- 3,213 ADUs; 412 supports; 145 conflicts

NL: We are talking about the violence which may have been perpetrated against Mau Mau suspects

NL: We know Kenya was a brutal war

# (4) Protocols of NL dialogue games

NL: We are talking about the violence which may have been perpetrated against Mau Mau suspects

NL: We know Kenya was a brutal war



## (4) Protocols of NL dialogue games

$$\mathbf{TS5} L_x^b \downarrow A_k(\phi)$$

$$L_y^w \downarrow PCOn_l(\psi)$$

$$b = w;$$

$$T(L_x^b, L_y^w) \downarrow ARG_m(\psi \vdash \phi)$$

# (4) Protocols of NL dialogue games

- 3 **mediation** dialogue games: critical discussion, bargain, therapeutic (Janier et al. 2015)
- **Mining** protocols from NL texts (Snaith & Reed 2016)

# Linguistic phenomena interwound with arguments

- argumentation schemes (Lawrence & Reed, 2016)
- rephrase relation which paraphrases parts of argument structures (Konat et al., 2016a; Visser et al. 2017)
- illocutionary intentions speakers associate with arguments (Budzynska et al., 2014a)
- protocols of argumentative dialogue games (Yaskorska, 2016; Yaskorska & Janier, 2016; Janier et al. 2015; Snaith & Reed, 2016)
- **reported speech**
- ethos of arguments' authors (Budzynska 2013; Koszowy & Budzynska 2016; Duthie et al., 2016a)

# (5) Reported speech

## **“US 2016 presidential debates” Corpus**

- <http://corpora.aifdb.org/US2016>
- 18,368 ADUs; 2,830 supports; 942 conflicts; 764 rephrases

CLINTON: Donald thinks that climate change is a hoax perpetrated by the Chinese . I think it 's real.

TRUMP : I did not . I did not . I do not say that.

CLINTON: I think science is real.

TRUMP: I do not say that.

## (5) Reported speech

CLINTON: Donald thinks that climate change is a hoax perpetrated by the Chinese . I think it 's real.

TRUMP : I did not . I did not . I do not say that.

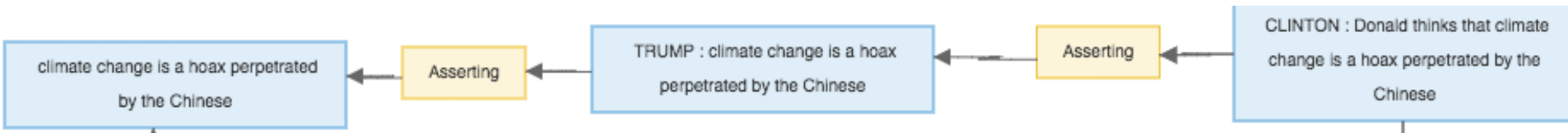
CLINTON: I think science is real.

TRUMP: I do not say that.

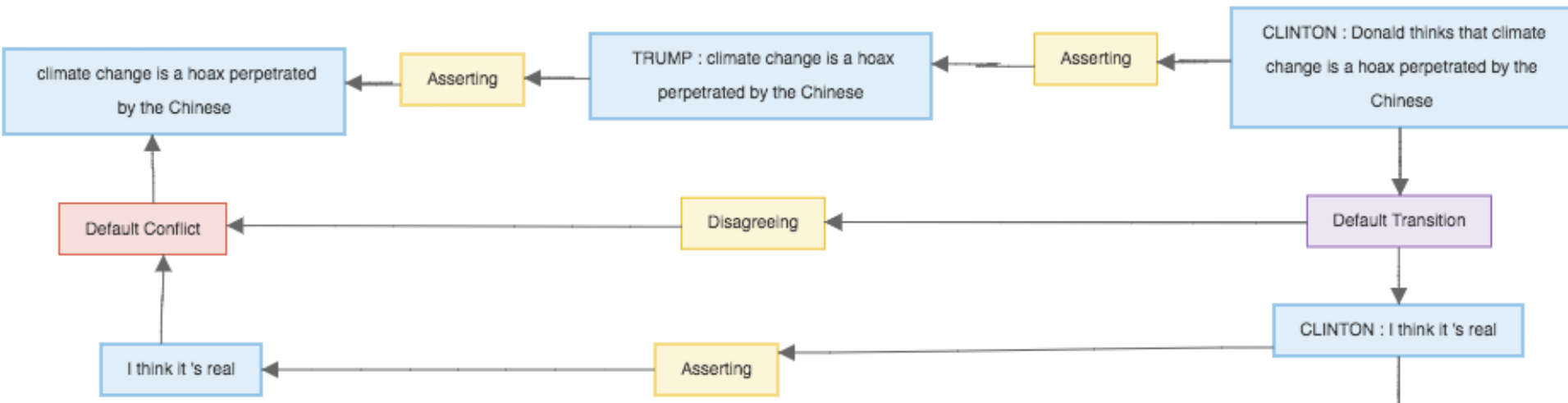
## (5) Reported speech



# (5) Reported speech

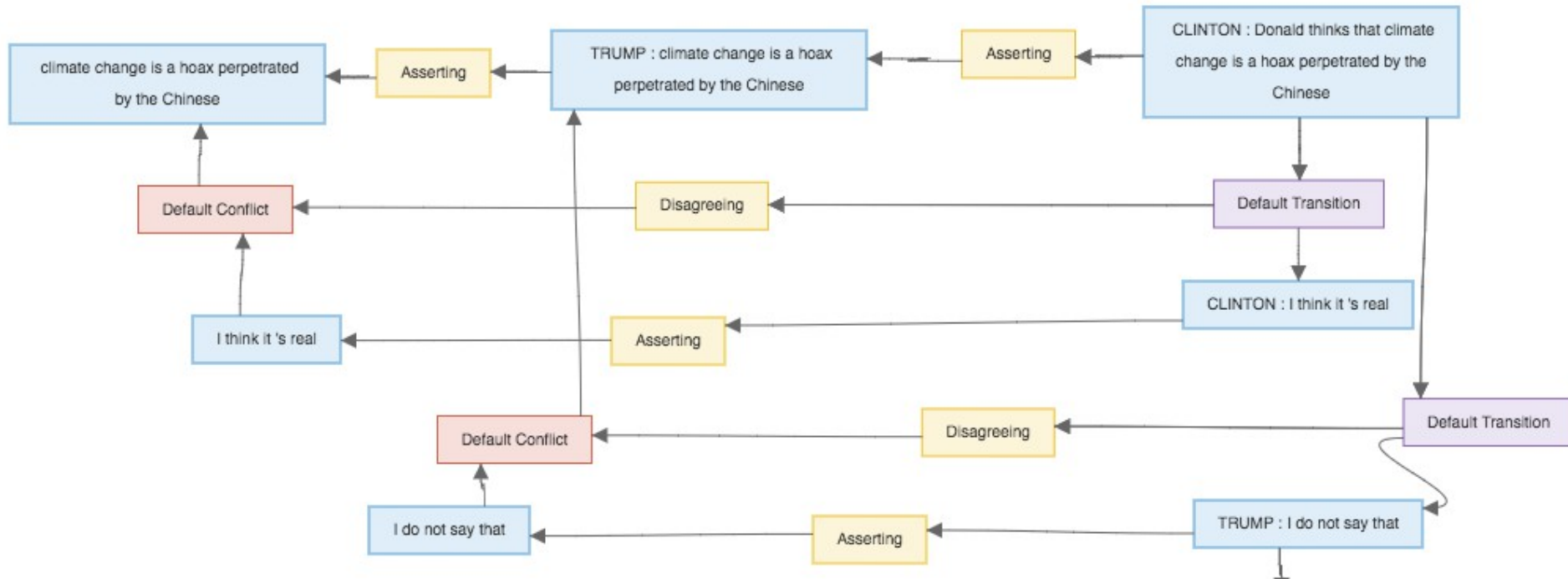


# (5) Reported speech

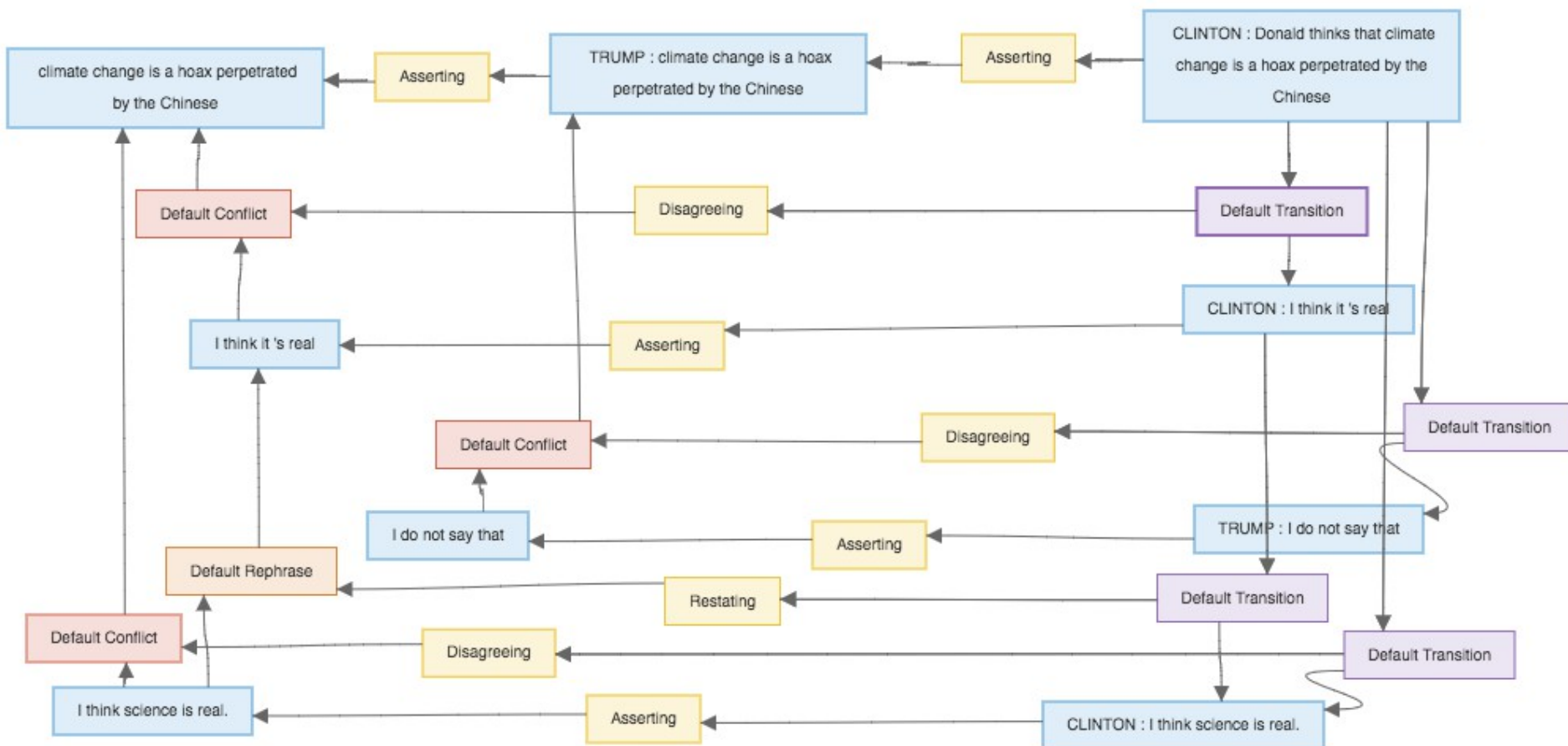




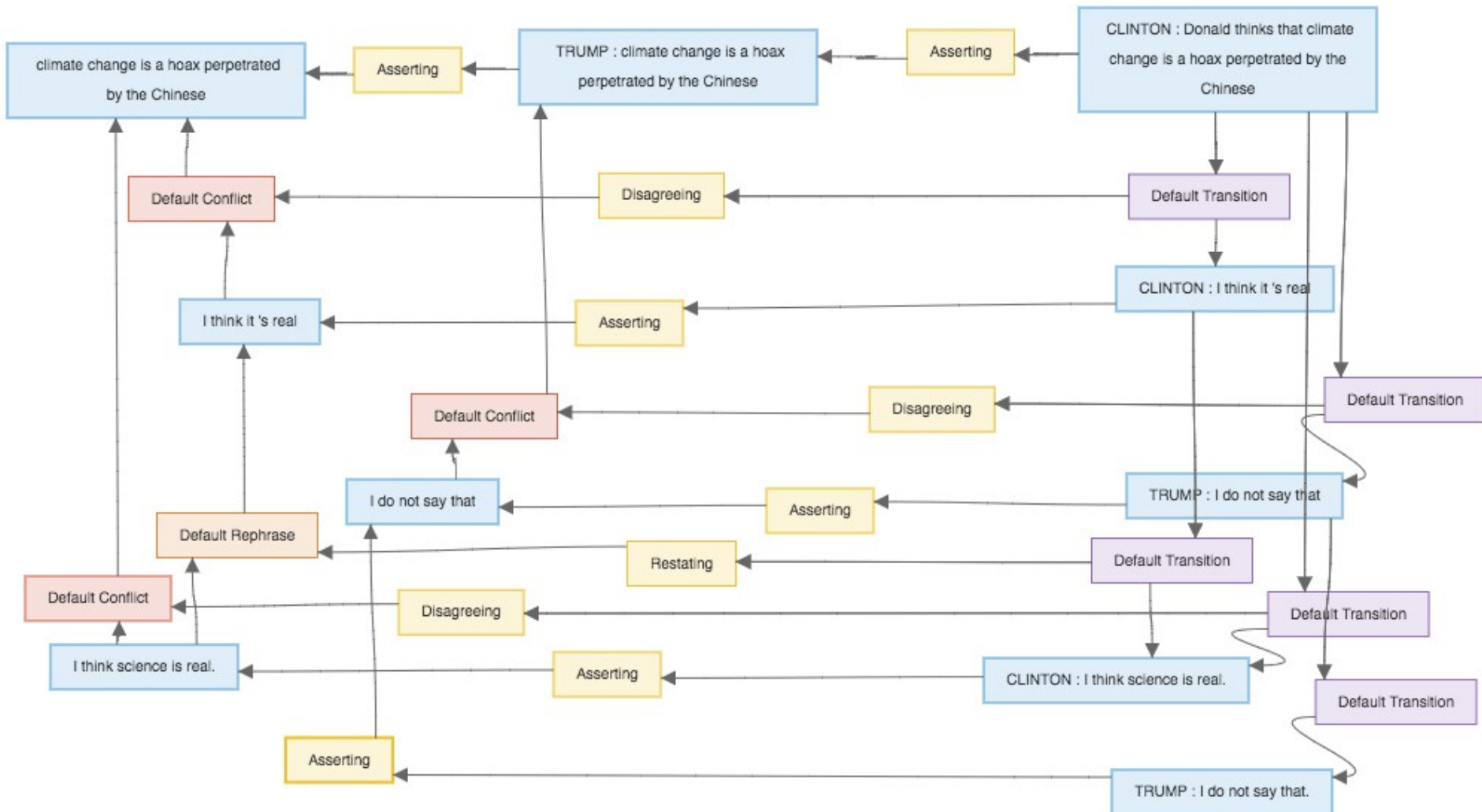
# (5) Reported speech



# (5) Reported speech



# (5) Reported speech



# Linguistic phenomena interwound with arguments

- argumentation schemes (Lawrence & Reed, 2016)
- rephrase relation which paraphrases parts of argument structures (Konat et al., 2016a; Visser et al. 2017)
- illocutionary intentions speakers associate with arguments (Budzynska et al., 2014a)
- protocols of argumentative dialogue games (Yaskorska, 2016; Yaskorska & Janier, 2016; Janier et al. 2015; Snaith & Reed, 2016)
- reported speech
- **ethos of arguments' authors (Budzynska 2013; Koszowy & Budzynska 2016; Duthie et al., 2016a)**

## (6) Ethos

**“Hansard records of UK parliamentary debates” Corpus**  
(Duthie et al., 2016)

- <http://corpora.aifdb.org/Ethan3>
- 608 ADUs; 155 supports; 453 ethos attacks

Map 11001

Mr. Nott: My hon. Friend (Mr. Henderson) is absolutely right.

Map 10986

Mr. Sedgemore: Can the right hon. Gentleman (Mr. Baker) confirm the message on the tapes today that he is running so scared, and so frit, and is sweating so profusely with fear, that he has cancelled all his engagements and left them to the office boy?

## (6) Ethos


Map 11001

Mr. Nott: My hon. Friend (Mr. Henderson) is absolutely right.

Map 10986


Mr. Sedgemore: Can the right hon. Gentleman (Mr. Baker) confirm the message on the tapes today that he is running so scared, and so frit, and is sweating so profusely with fear, that he has cancelled all his engagements and left them to the office boy?


# (6) Ethos (support)





version 2.1  
online visualisation of argument


Developed By  
**ARG-tech**  
Centre for Argument Technology


Add Node


Add Edge

New Analysis

Save Analysis

Load Analysis

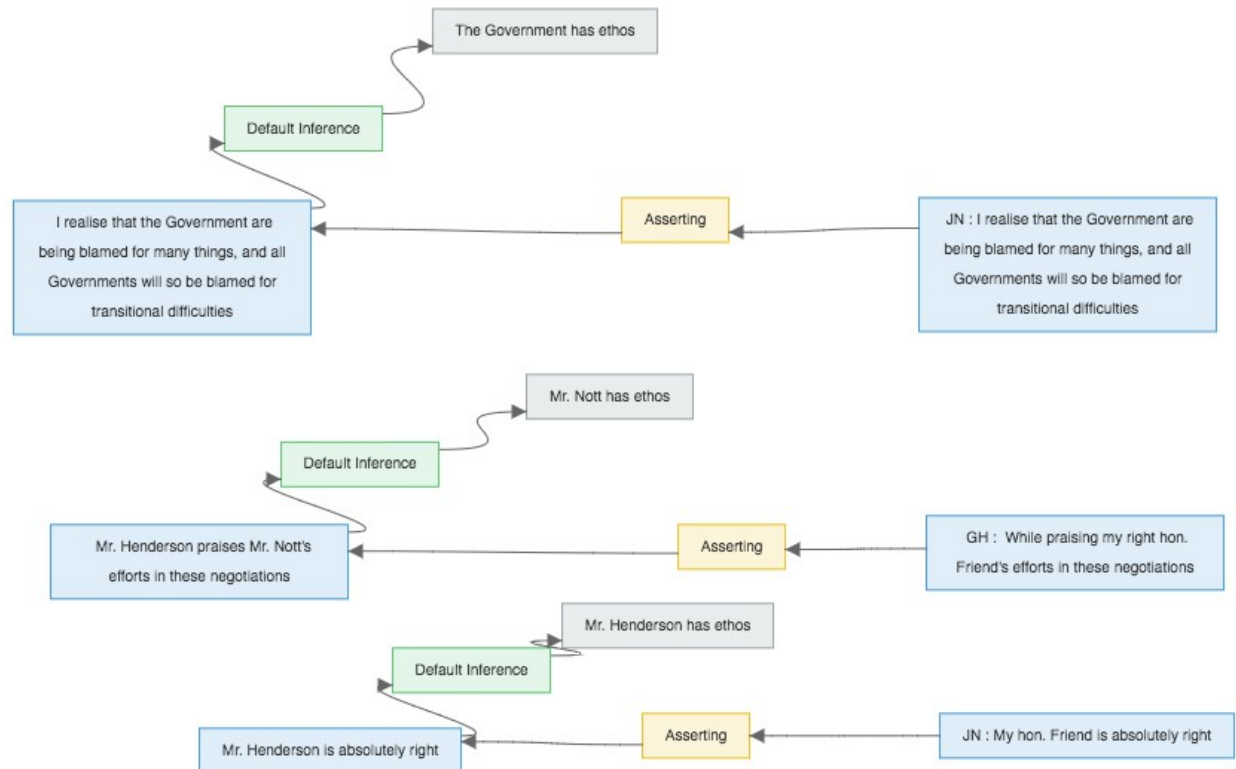
Autolayout

Settings

Government for its problems, just as the textile industry placed the major part of the blame on the Labour Government for its problems when the Labour Government were in office. I remind the hon. Gentleman that 150,000 people lost their jobs while the Labour Government were in office. Therefore, this problem is not new. Several hundred thousand people have left the textile industry in the past 30 years. Of course, I realise that the Government are being blamed for many things, and all Governments will so be blamed for transitional difficulties.

Mr. Henderson: While praising my right hon. Friend's efforts in these negotiations, may I ask him whether he agrees that a root problem is the artificially low pricing policy on energy followed by the United States Government, which is affecting not only this industry but others, including paper? Can he confirm that he and his right hon. Friends are seeking to do something about that?

Mr. Nott: My hon. Friend is absolutely right. There is a major problem with the low feedstock prices in the United States. It is not just in fibres that this is causing difficulty. As my hon. Friend said, it is also causing problems in chemicals, plastics and a range of European industries. I am now in the process of considering our response to the





# (6) Ethos (attack)

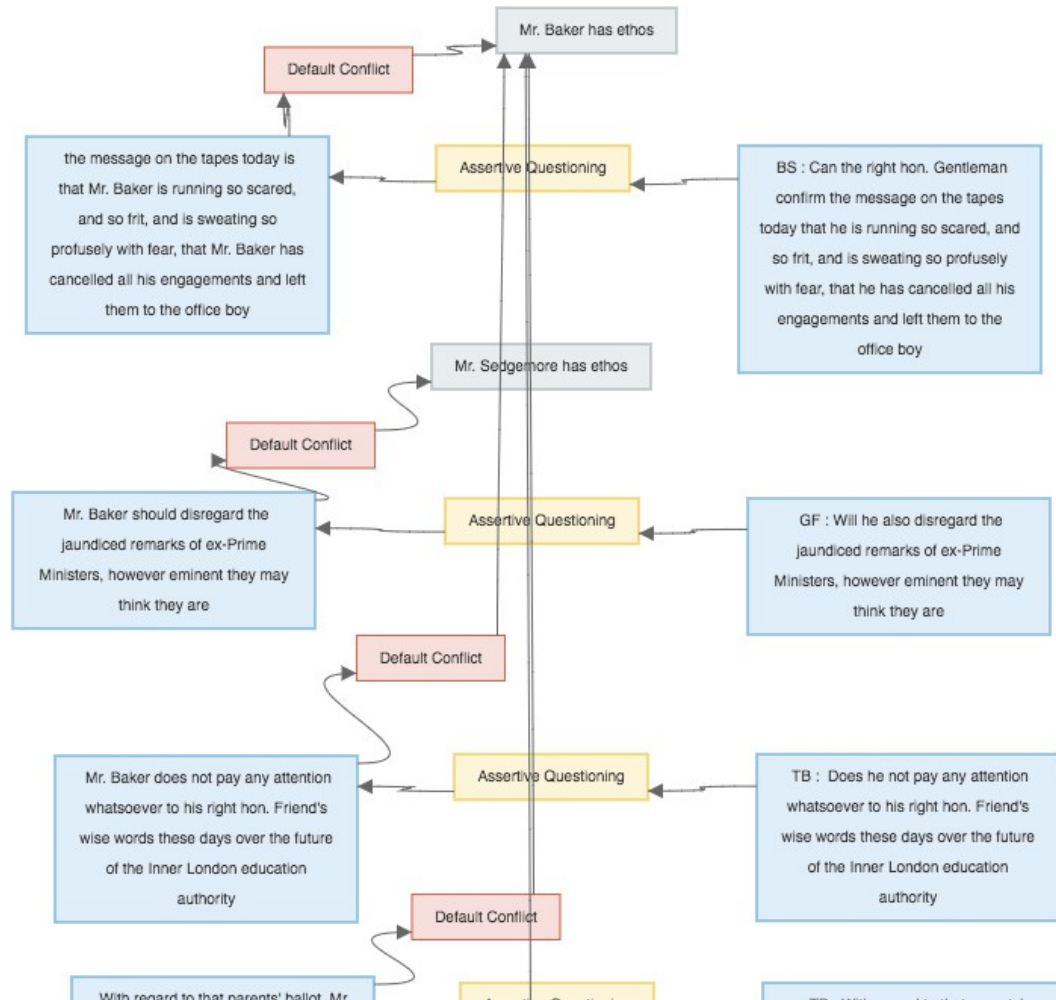
Mr. Sedgemore: To ask the Secretary of State for Education and Science what recent representations he has received about the future of education in inner London; and if he will make a statement.

Mr. Kenneth Baker: Since my announcement on 4 February my Department has received many comments from many sources.

Mr. Sedgemore: Can the Secretary of State give the House an assurance that, if the House of Lords stiffens its spine and decides that there should be a review of ILEA before any decision on abolition, he will recommend that the House accepts that decision? Can the right hon. Gentleman confirm the message on the tapes today that he is running so scared, and so frit, and is sweating so profusely with fear, that he has cancelled all his engagements and left them to the office boy?

Mr. Baker: I do not appear at the Dispatch Box as a trembling, blushing violet. I understand that the House of Lords has just started, or will shortly start, a debate on ILEA. We shall all watch the outcome with great interest.

Sir Geoffrey Finsberg: Will my right hon. Friend bear in mind that there are 20 times as many residents in inner London as those who took part in the so-called phoney parents' ballot? Will he also disregard the jaundiced remarks of ex-Prime Ministers,





# **(3/4) Argument Mining**

# **(3a/4) Mining Arguments from Dialogue**

(Budzynska et al. 2014b; 2015; 2016)



NATIONAL SCIENCE CENTRE  
POLAND

**Innovate UK**

**EPSRC**

Engineering and Physical Sciences  
Research Council

**ARG-tech**  
Centre for Argument Technology

# BBC Radio 4 programme

## *Moral Maze*



	Transcripts	Maps	Dialogue turn	Segments	Words	Location
<b>MM2012c</b>	5	202	812	3,227	41,926	<a href="http://arg.tech/mm2012c">arg.tech/mm2012c</a>



# Annotation

<b>IC type</b>	<b>Agreeing</b>	<b>Disagreeing</b>	<b>Arguing</b>	<b>TOTAL</b>
<b>Occurrences</b>	119 (10%)	219 (18%)	853 (72%)	1,191 (100%)
<b>Kappa <math>\kappa</math></b>				.76

# Linguistic model: Arguing

$$\mathbf{TS5} L_x^b \downarrow A_k(\phi)$$

$$L_y^w \downarrow PCOn_l(\psi)$$

$$b = w;$$

$$T(L_x^b, L_y^w) \downarrow ARG_m(\psi \vdash \phi)$$

# Linguistic model: Arguing

- **epistemic verbs**: think, mean, believe, insist, want, approve, support, recognise
- typical **cause-consequence** forms: because, entails, follows, in addition, furthermore, then, indeed followed by a proposition
- **affirmations** of the form: Noun IS/MODAL Property/Event, where modal is e.g. should, would, must, want
- **discourse organisers** such as *the point is, the challenge is then, may be, the fact is, well it must*, etc.
- **confirmation** of a previous statement by using quite similar terms, possibly by adding some information.

# Linguistic model: Disagreeing

$$L_x^b \downarrow \textit{asserting}_k (\phi)$$

$$L_y^w \downarrow \textit{assertivequestioning}_l (\psi)$$

$$b \neq w;$$

$$T(L_x^b, L_y^w) \downarrow \textit{disagreeing}_m (\psi \vdash \phi)$$



# Linguistic model: Disagreeing

- **variants of negation:** I do not, I cannot, can never
- negatively oriented **propositional attitudes:** I disagree, I cannot accept
- **contrastive connectors** between Lx and Ly: however, but
- negatively oriented **lexical terms:** sluggish, bad, wrong
- **contextually** negative terms: coercive, peculiar, warnings, dangerous; or negative **judgement terms:** unwanted, undesired, hazardous
- **antonyms** in Lx and Ly, bipolar or continuous: expensive/cheap, moral/immoral , or via the negation: coercive / not coercive

# Linguistic model: Agreeing

$$L_x^b \downarrow \textit{assertivequestioning}_k (\phi)$$

$$L_{\textit{yes'}}^w$$

$$b \neq w;$$

$$T(L_x^b, L_{\textit{yes'}}^w) \downarrow \textit{agreeing}_m (\phi)$$

# Linguistic model: Agreeing

- typical **forms of approving**: yes, OK, I'm happy
- verbs expressing an **opinion that approves Lx content**: I think, they are right, I agree, I like
- typical **positive evaluative expressions**: sympathetic, interesting, powerful point
- typical **positive binders** between Lx and Ly: as you say, your own experience; not followed by any negative expression

# Implementation: <TextCoop > (Saint-Dizier 2012)

```
<utterance speaker = "lj" illoc = "standard  
assertion"><textunit nb = "215"> it was a ghastly  
aberration </textunit> </utterance> .
```

```
<utterance speaker = "cl" illoc = "RQ"> <textunit nb=  
"216"> or was it in fact typical ? < /textunit>  
</utterance> .
```

```
<utterance speaker = "cl" illoc = "RQ-AQ"> <textunit  
nb = "217"> was it the product of a policy that was  
unsustainable that could only be pursued by  
increasing repression? < /textunit> </utterance>.
```

# Results

Table VIII. Automatic identification of illocutionary connections anchored in transitions

<b>IC type</b>	<b>Correct</b>	<b>Incorrect</b>
Agreeing (Agr)	85%	15%
Disagreeing (Disagr)	82%	18%
Arguing (Arg)	95%	5%
<b>TOTAL</b>	<b>87%</b>	<b>13%</b>

Table IX. Automatic identification of argument structures

<b>Type of argument structure</b>	<b>Correct</b>	<b>Incorrect %</b>
Inference	100%	0%
Conflict	88%	12%
<b>TOTAL</b>	<b>94%</b>	<b>6%</b>

# **(3b/4) Mining Ethos in Political Debate**

(Duthie et al. 2016a; Duthie &  
Budzynska 20xx)



NATIONAL SCIENCE CENTRE  
POLAND



Engineering and Physical Sciences  
Research Council

# Alliances and Enmities

Example 1 Mr. Chris Patten said, *The hon. Member for Falkirk, East (Mr. Ewing) in his admirable speech, put the position much more clearly than I could.*

Example 2 Mr. Giles Radice said, *In doing so he (Mr. Pawsey) failed to face up to his responsibility both to the House and to the schools of England, Scotland and Wales.*

# Alliances and Enmities

Example 1 Mr. Chris Patten said, *The hon. Member for Falkirk, East (Mr. Ewing) in his **admirable speech**, put the position much more clearly than I could.*

Example 2 Mr. Giles Radice said, *In doing so he (Mr. Pawsey) **failed to** face up to his responsibility both to the House and to the schools of England, Scotland and Wales.*



# UK parliamentary record (Hansard)

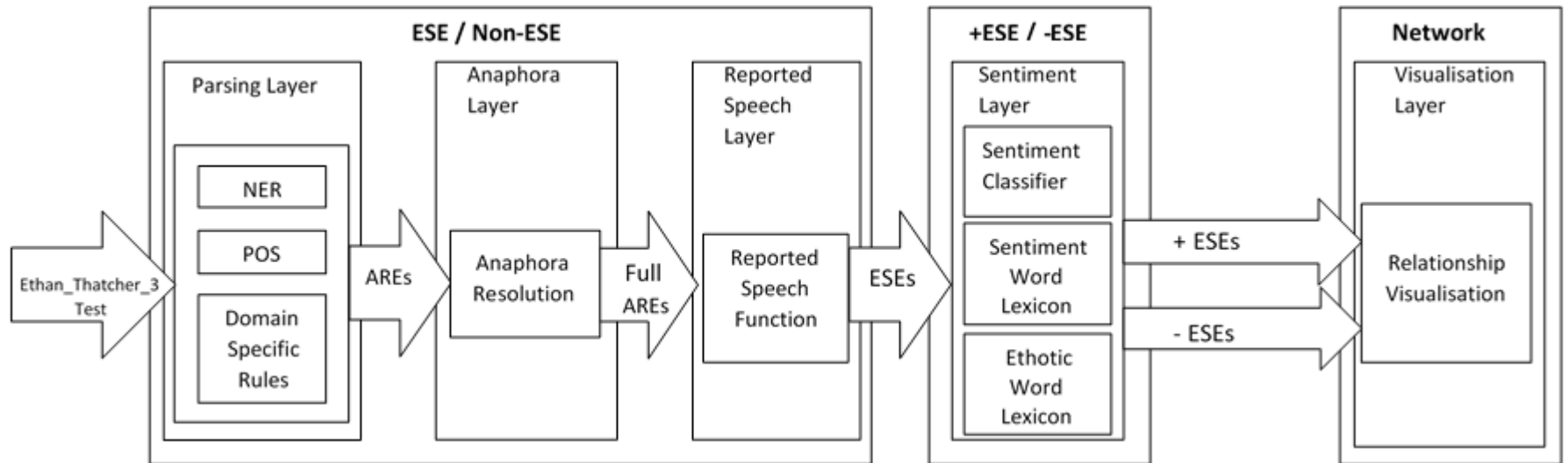


Corpus	Sessions	Words	Segments	Speakers	Location
Train	30	40,939	387	127	<a href="http://arg.tech/Ethan3Train">http://arg.tech/Ethan3Train</a>
Test	30	29,178	352	126	<a href="http://arg.tech/Ethan3Test">http://arg.tech/Ethan3Test</a>
TOTAL	60	70,117	739	253	

# Annotation

	Occurrences	Kappa
Source-person	243	1
Target-person	212	.84
Ethos support	179	.95 (out of .67)
Ethos attack	560	.95 (out of .67)
TOTAL	1,194	

# Automation

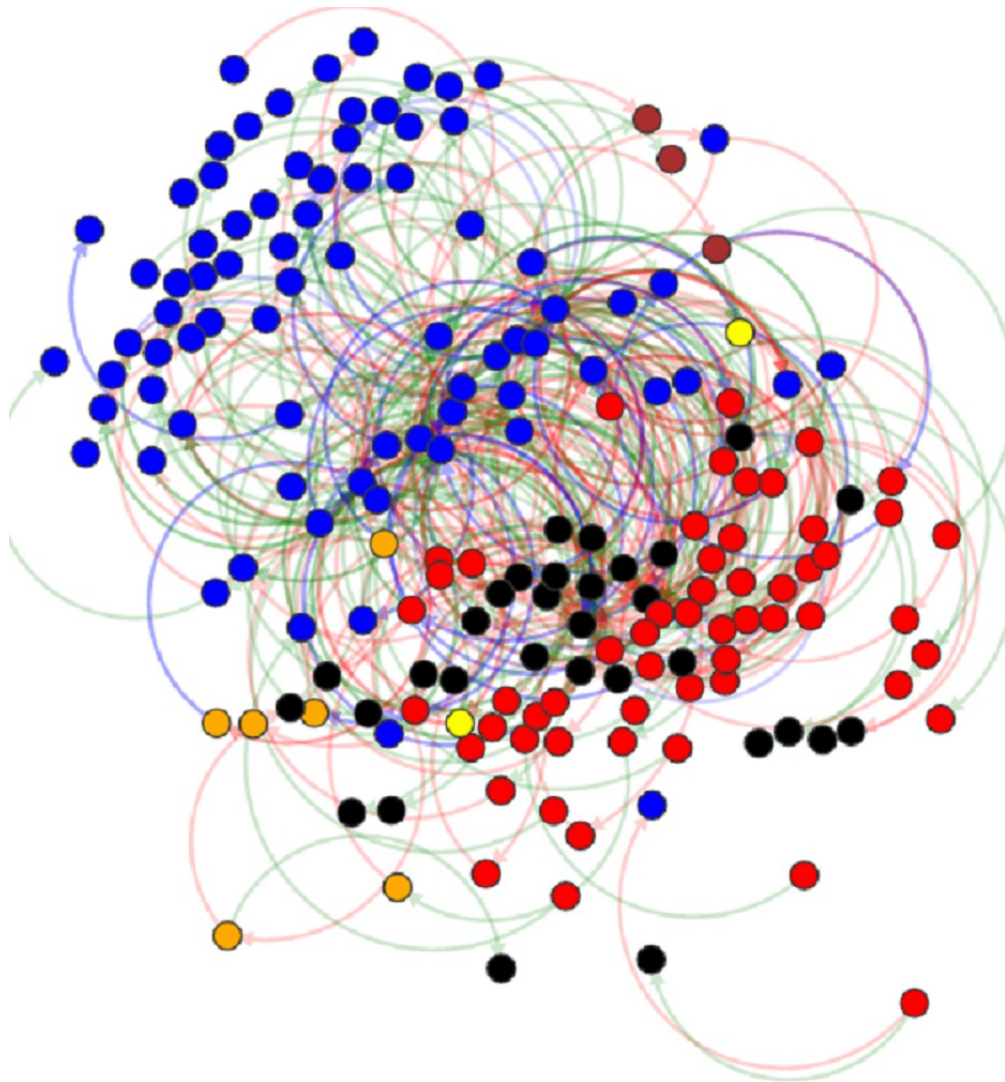


# Results

<b>ESE/Non-ESE</b>	<b>Precision</b>	<b>Recall</b>	<b><i>F</i>-score</b>
Baseline	0.29	1	0.45
SVM	0.30	0.30	0.30
NB	0.20	0.94	0.32
ME	0.46	0.27	0.34
NER, POS, DSR, AnaR, RSF	0.62	0.77	0.69*
POS, DSR, AnaR, RSF	0.64	0.76	0.70*

<b>+/- ESE</b>	<b>Precision</b>	<b>Recall</b>	<b><i>F</i>-score</b>
Baseline	0.50	1	0.67
NB, SWL	0.58	0.57	0.57
ME, SWL	0.6	0.65	0.62
SVM, SWL	0.64	0.59	0.62
NB, SWL, EWL	0.74	0.67	0.71*
ME, SWL, EWL	0.71	0.73	0.72*
SVM, SWL, EWL	0.78	0.78	0.78*

# Visualisation



## Ethotic Statements

Source: Mr. Simon Hughes

Target: Government

**Ethos Expression:** Until that happens this will be a bigger muddle than any of the other reorganisations that local government has gone through at the behest of the Government and the Conservative predecessors.

Conservative: ■  
Labour: ■  
Liberal: ■  
SNP: ■  
UUP: ■  
Misc: ■

# **(4/4) Argument Analytics**

(Konat et al. 2016b;  
Lawrence et al. 2016; 2017a)



NATIONAL SCIENCE CENTRE  
POLAND

**Innovate UK**

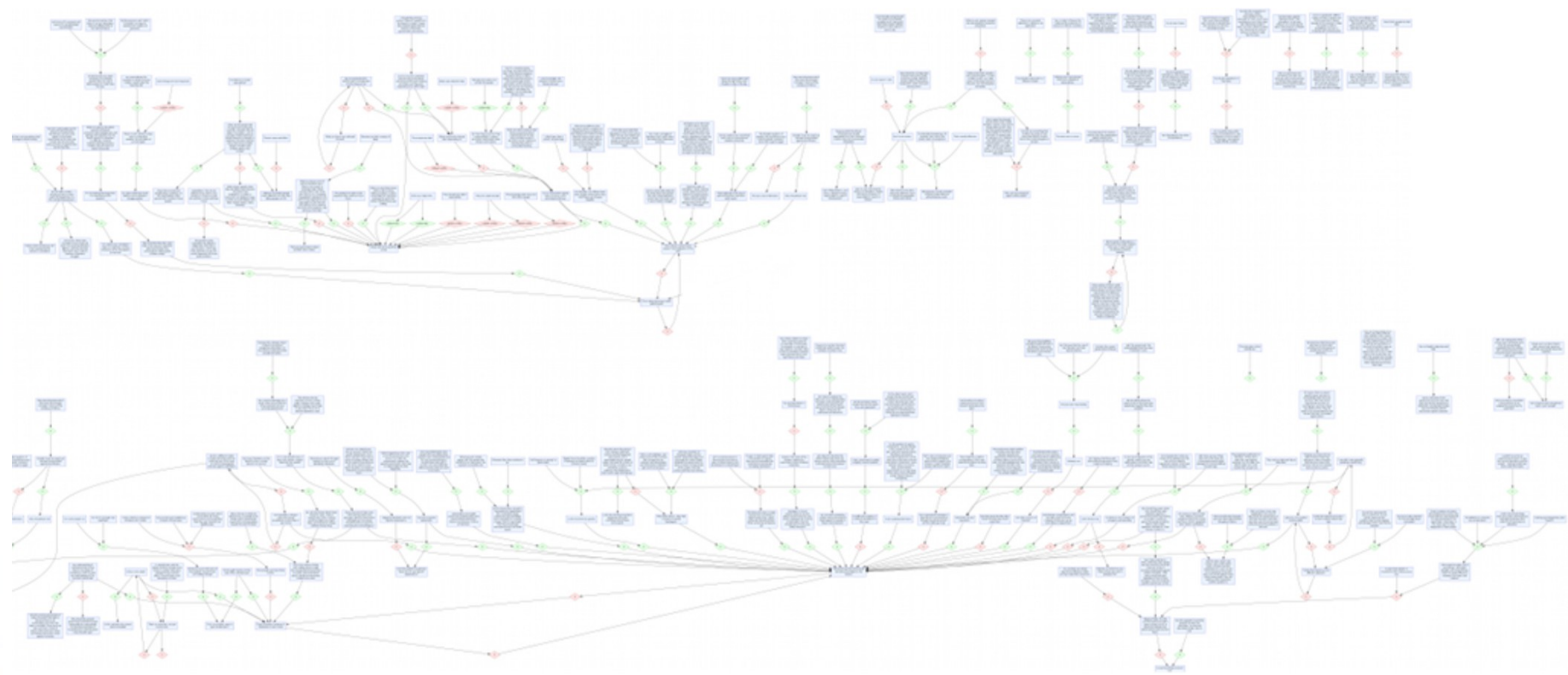
**EPSRC**

Engineering and Physical Sciences  
Research Council

**ARG-tech**  
Centre for Argument Technology











# Argument Analytics

<http://analytics.arg.tech>

- Present details of an argumentative structure in a format **easily digested by a general audience**
- Automatically **calculate detailed statistics** about argumentative structures for in-depth analysis
- Provide an overview of the **participants** and their interactions in a dialogue
- Calculate the **similarity between argument maps** (inter-annotator agreement and performance of automatic approaches)
- Work with existing argument resources and **real-time arguments** as they are being created



# Argument Analytics








Argument Analytics

NodeSetID or Corpus Name



# (1) Simple statistics: Overview

-  Overview
-  Dialogue
-  Graph Properties
-  Detailed Statistics
-  Comparative Properties

## NodeSet 732 – Overview

INFORMATION NODES

67

AVERAGE WORDS PER NODE

9.13

CONFLICT NODES

27

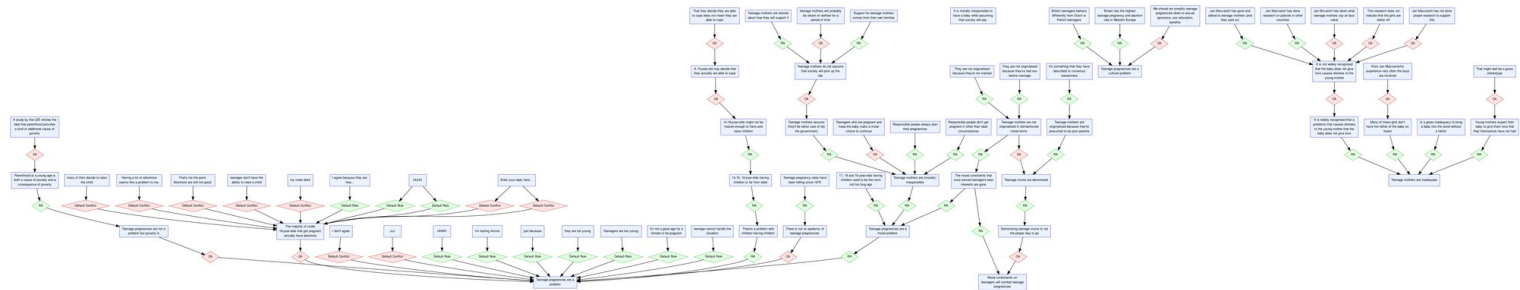
[Details](#)

SUPPORT NODES






39

[Details](#)

## Argument Map



# (1) Simple statistics: Pattern counts

-  Overview
-  Dialogue
-  Graph Properties
-  Detailed Statistics
-  Comparative Properties

## cd – Detailed Statistics

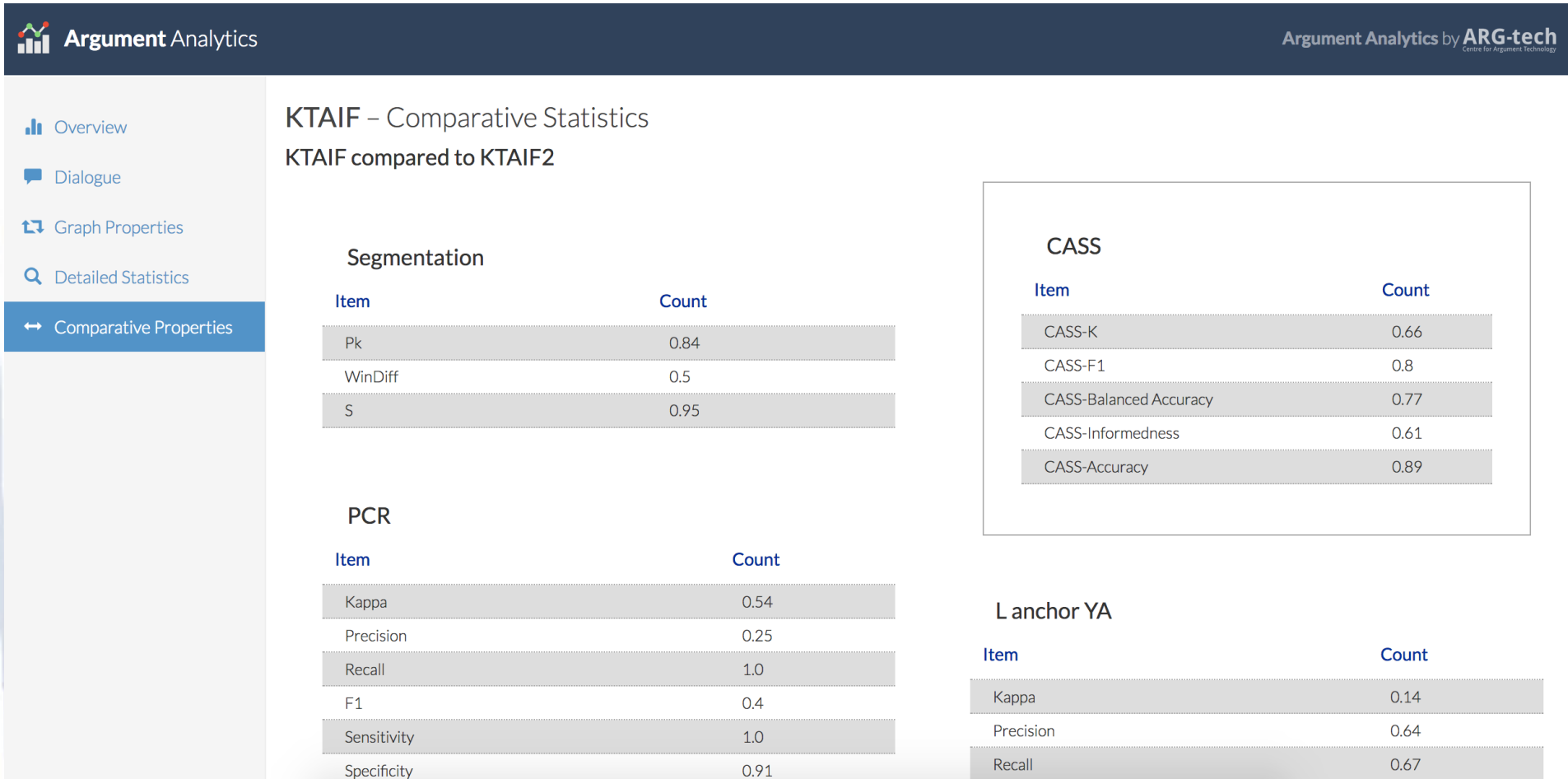
### Counts

Item	Count
Asserting	551
Asserting in Transition	2
Asserting in Locution	543
Assertive Questioning	54
Assertive Questioning in Transition	0
Assertive Questioning in Locution	53
Pure Questioning	30
Pure Questioning in Transition	0
Pure Questioning in Locution	30
Arguing	151
Arguing in Transition	151
Arguing in Locution	0
Default Illocuting	24
Default Illocuting in Transition	23
Default Illocuting in Locution	1

Item	Count
Restating	65
Restating in Transition	65
Restating in Locution	0
Agreeing	35
Agreeing in Transition	29
Agreeing in Locution	6
Disagreeing	25
Disagreeing in Transition	24
Disagreeing in Locution	1
Pure Challenging	1
Pure Challenging in Transition	0
Pure Challenging in Locution	1
Assertive Challenging	2
Assertive Challenging in Transition	0
Assertive Challenging in Locution	2

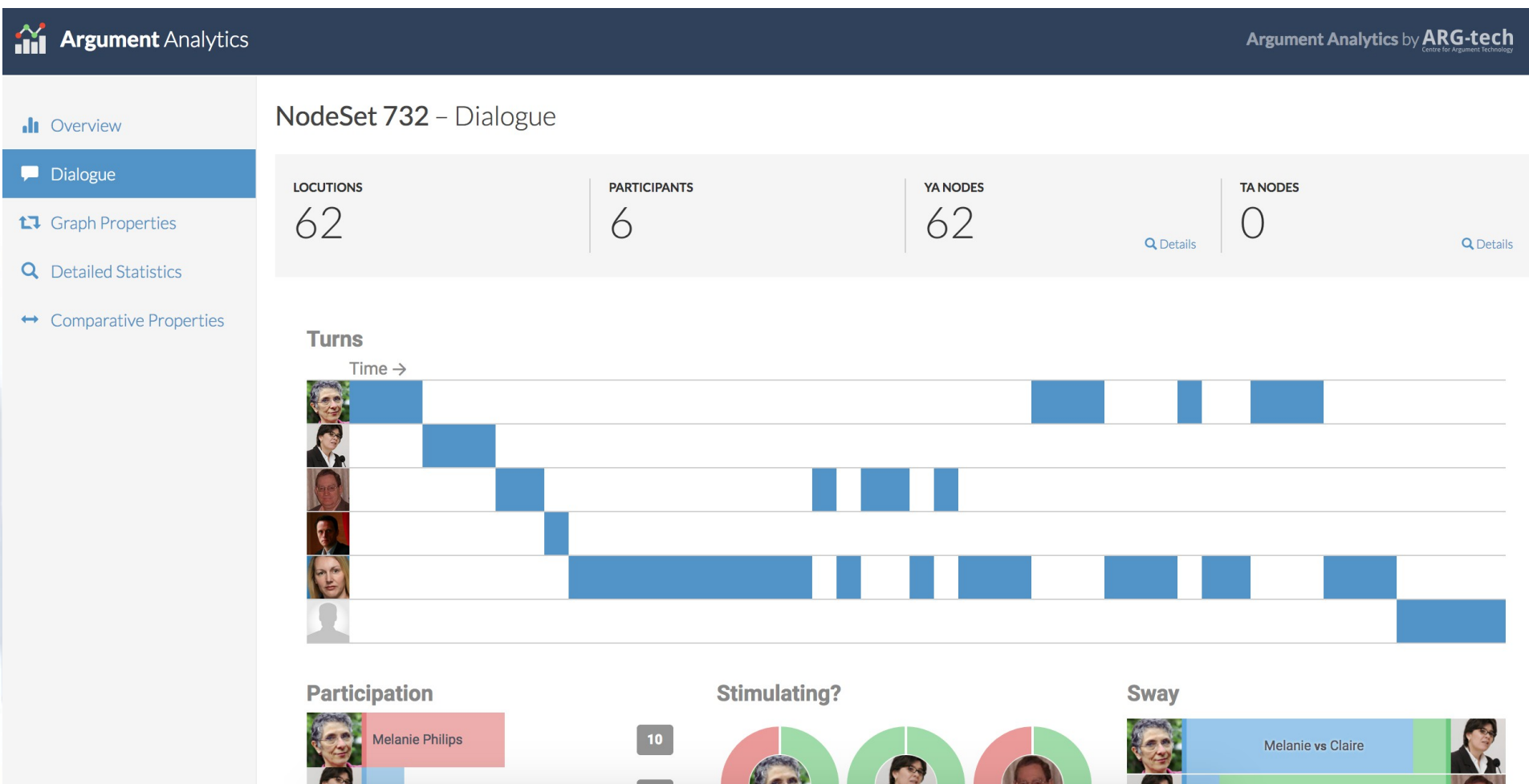
Item	Count
Default Inference	153
Default Rephrase	88
Default Conflict	23
RA Total	153
CA Total	23
MA Total	88
Default Transition	563
TA Total	563
Locutions	672
YA in Locution	637
Locution with NO YA	35
YA in Transition	294
Transition with NO YA	269
Reported Speech	1

## (2) Comparative statistics

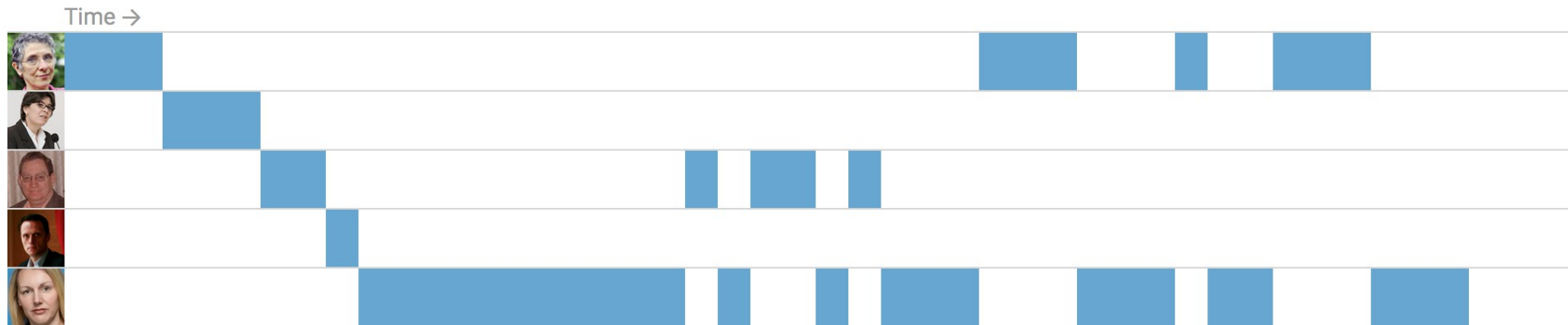


CASS metrics (Duthie et al. 2016b)

# (3) Dialogically oriented statistics

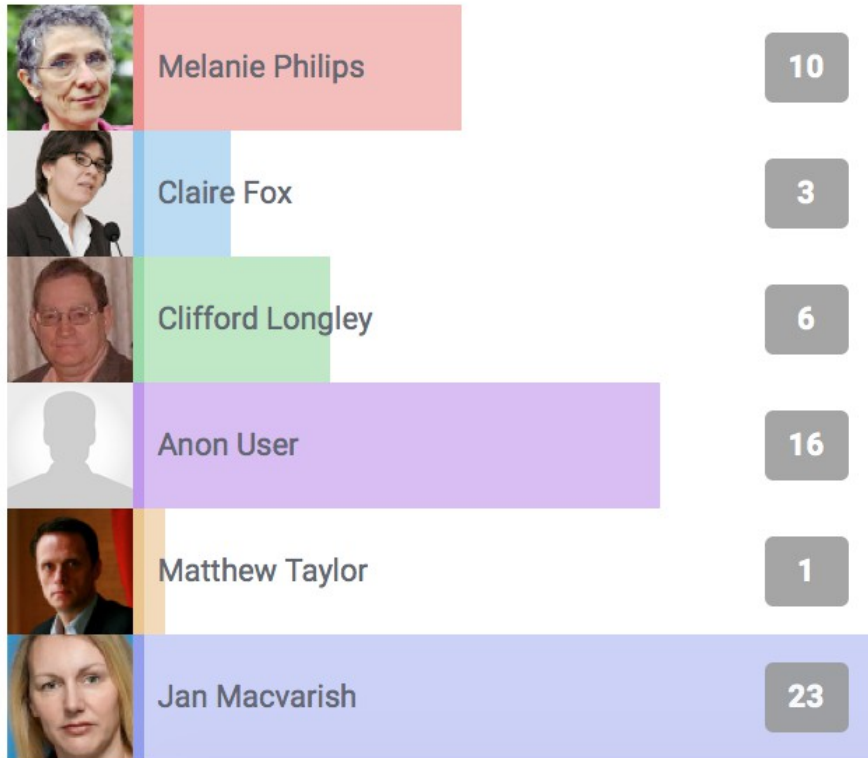


### (3) Dialogically oriented statistics: Turn structure

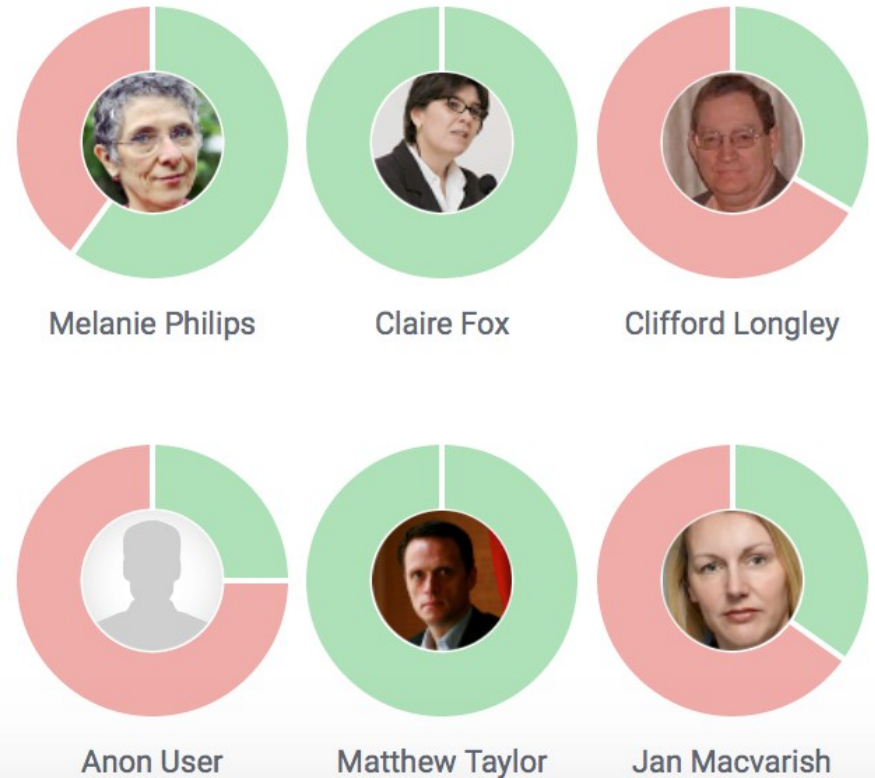


# (3) Dialogically oriented statistics: Participants details

## Participation

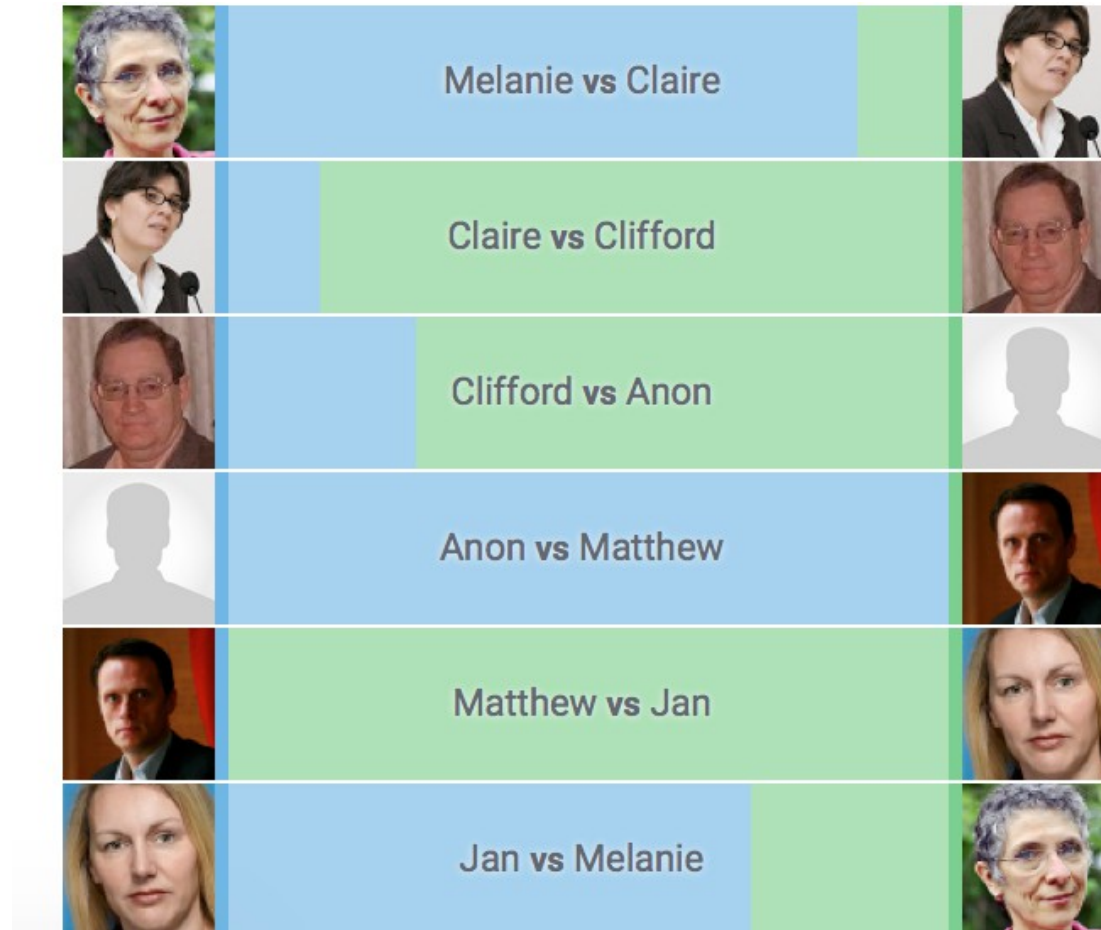


## Stimulating?

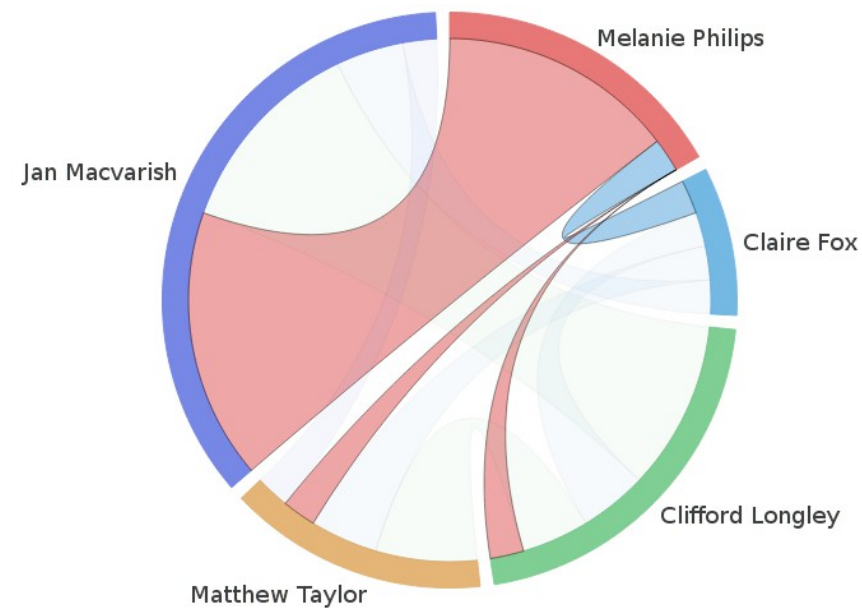
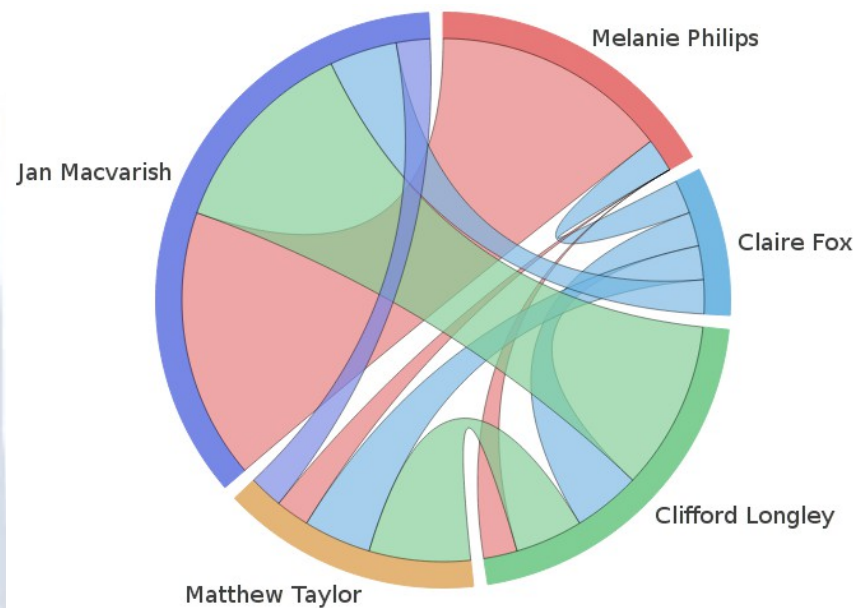




### (3) Dialogically oriented statistics: Sway



### (3) Dialogically oriented statistics: Interactions



# (4) Real-time statistics

## BESiDE Dialogue Tool

Supporting Purposeful Conversations about Care homes



Stop Recording

**Chris Reed**

Reply about Location

**John Lawrence**

Ask a question about Location

Segment

**BESiDE**

Built Environment for Social Inclusion  
through the Digital Economy

**John Lawrence**

0mins 0secs

Ask for a reason

Ask a question about **Location**

Ask a question about **Routes through Care Home**

Ask a question about **Internal Environment**

Ask a question about **Stimulation and Activities**

Ask a question about **Personalisation**

Ask a question about **Seating**

Ask a question about **Communication**

Ask a question about **Thresholds**

Ask a question about **External Environment**

0mins 8secs

# (4) Real-time statistics

[Click to view Argument Map »](#)

## Transcript



**Fiona Welch**

Ask a question about Stimulation and Activities



**Paul Rowley**

Reply about Stimulation and Activities



**Fiona Welch**

Ask a question about Stimulation and Activities



**Paul Rowley**

Reply about Stimulation and Activities



**Fiona Welch**

Ask a question about Stimulation and Activities



**Paul Rowley**

Reply about Stimulation and Activities



**Denise McCorkindale**

Reply about Stimulation and Activities



## Current Topic: External Environment

- ✗ Location
- ✗ Routes through Care Home
- ✗ Seating
- ✗ Communication
- ✗ Thresholds

- ✓ Internal Environment
- ✓ Stimulation and Activities
- ✓ Personalisation
- ✓ External Environment

## Speakers

	Fiona	13
	Denise	7
	Paul	6
	Neil	3
	Marianne	6

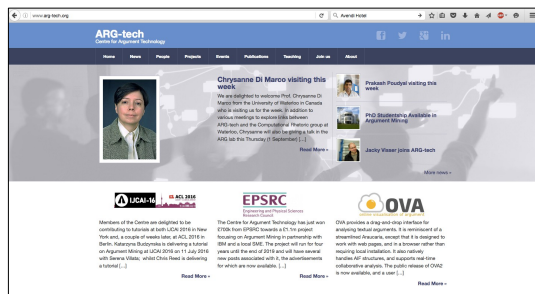
## Topics

	Location	0
	Routes through Care Home	0
	Internal Environment	2
	Stimulation and Activities	15
	Personalisation	16
	Seating	0
	Communication	0

# Summary

- **Foundations:**
  - Inference Anchoring Theory: Dialogical context of arguments
  - Argument Web: Online ecosystem of argument technologies
- **Argument corpora:** Recognising complex argument structures in NL is hard
- **Argument mining:** Automatic identification of argument structure
  - From dialogue
  - Related with speakers' ethos
- **Argument analytics:** Automatic sense-making of argument structure

# Thank you



Find out more at  
<http://arg.tech>



*Computational  
Models of Argument*  
COMMA 2018  
In Warsaw



*Polish School  
of Argumentation*  
ArgDiap 2017  
<http://argdiap.pl>

kasia@arg.tech  
chris@arg.tech

## REFERENCES (1/3)

- **(Budzynska 2013)** Circularity in Ethotic Structures. *Synthese* 190(15): 3185-3207.
- **(Budzynska & Reed, 2011)** Whence inference, *Technical Report*.
- **(Budzynska & Villata, 2017)** Processing Argumentation in Natural Language Texts, *Handbook of Formal Argumentation*, accepted for publication.
- **(Budzynska et al., 2014a)** Budzynska, Janier, Reed, Saint-Dizier, Stede & Yakorska. A Model for Processing Illocutionary Structures and Argumentation in Debates. *Proc. of the 9th edition of the Language Resources and Evaluation Conference (LREC 2014)*, Calzolari et al. (Eds.), pp. 917-924.
- **(Budzynska et al. 2014b)** Budzynska, Janier, Kang, Reed, Saint-Dizier, Stede & Yaskorska. Towards Argument Mining from Dialogue, *Proc. of 5th International Conference on Computational Models of Argument COMMA 2014*, (266): 185-196.
- **(Budzynska et al. 2015)** Budzynska, Janier, Konat, Kang, Reed, Saint-Dizier, Stede & Yaskorska. Automatically identifying transitions between locutions in dialogue, *Studies in Logic and Argumentation*, King's College Publication.
- **(Budzynska et al. 2016)** Budzynska, Janier, Reed & Saint-Dizier. Theoretical Foundations for Illocutionary Structure Parsing, *Argument and Computation*, IOS Press, vol. 7, no. 1, pp. 91-108.
- **(CACM 2013)** Bex, Lawrence, Snaith, & Reed. Implementing the Argument Web, *Communications of the ACM*, 56 (10), pp66-73.
- **(Duthie & Budzynska, 20xx)** Ethos Mining, in review.
- **(Duthie et al., 2016a)** Duthie, Budzynska & Reed. Mining Ethos in Political Debate, *Proc. of 6th International Conference on Computational Models of Argument (COMMA 2016)*, vol. 287, IOS Press, pp. 299-310.
- **(Duthie et al., 2016b)** Duthie, Lawrence, Budzynska & Reed. The CASS Technique for Evaluating the Performance of Argument Mining, *Proc. of 3rd ArgMin workshop at Association of Computational Linguistics, ACL*, pp. 40-49.



## REFERENCES (2/3)

- **(Janier & Reed, 2016a)** Corpus resources for dispute mediation discourse. *Proceedings of the 10th Language Resources and Evaluation Conference (LREC 2016)*.
- **(Janier & Reed, 2016b)** Towards a Theory of Close Analysis for Dispute Mediation Discourse. *Argumentation*.
- **(Janier & Reed, 2017)** I didn't say that! : Uses of SAY in mediation discourse. *Discourse Studies*, 19(5), 2017.
- **(Janier et al. 2015)** Janier, Aakhus, Budzynska & Reed. Modeling argumentative activity with Inference Anchoring Theory: The case of impasse, *Studies in Logic and Argumentation*, King's College Publication.
- **(Janier et al. 2016)** Janier, Snaith, Budzynska, Lawrence & Reed, A System for Dispute Mediation: The Mediation Dialogue Game, *Proceedings of the Sixth International Conference on Computational Models of Argument (COMMA 2016)*.
- **(Konat et al., 2016a)** Konat, Budzynska & Saint-Dizier. Rephrase in Argument Structure, *Foundations of the Language of Argumentation – 6th International Conference on Computational Models of Argument (COMMA 2016)*, 32-39.
- **(Konat et al., 2016b)** Konat, Lawrence, Park, Budzynska & Reed. A Corpus of Argument Networks: Using graph properties to analyse divisive issues, *Proc. of the 10th edition of the Language Resources and Evaluation Conference (LREC 2016)*.
- **(Koszowy & Budzynska, 2016)** Towards a Model for Ethotic Structures in Dialogical Context. *Foundations of the Language of Argumentation – the workshop at the 6th International Conference on Computational Models of Argument (COMMA 2016)*, 40-47.
- **(Lawrence & Reed, 2016)** Argument Mining using Argumentation Scheme Structures. *Proceedings of the Sixth International Conference on Computational Models of Argument (COMMA 2016)*.



## REFERENCES (3/3)

- **(Lawrence et al. 2016)** Lawrence, Duthie, Budzynska & Reed. Argument Analytics, Proc. of 6th International Conference on Computational Models of Argument (COMMA 2016), vol. 287, pp. 371-378.
- **(Lawrence et al. 2017a)** Lawrence, Park, Konat, Budzynska, Cardie & Reed. Mining Arguments for Mapping Controversies in Online Deliberative Democracy and eRulemaking, *Association for Computing Machinery's Transactions on Internet Technology (ACM TOIT)*.
- **(Lawrence et al. 2017b)** Lawrence, Snaith, Konat, Budzynska & Reed. Debating Technology for Dialogical Argument: Sensemaking, Engagement and Analytics. Special issue on "Argumentation in Social Media", *Association for Computing Machinery's Transactions on Internet Technology (ACM TOIT)*.
- **(Moens, Boiy, Palau, & Reed 2007)** Automatic Detection of Arguments in Legal Texts. *Int. Conference on AI & Law (ICAIL-2007)*, Stanford, CA, pp225-230.
- **(Rahwan et al. 2007)** Rahwan, Zablith & Reed. Laying the Foundations for a World Wide Argument Web, *Artificial Intelligence*, 171, pp897-921.
- **(Reed et al., 2017)** Reed, Budzynska, Duthie, Janier, Konat, Lawrence, Pease & Snaith. The Argument Web: An online ecosystem of tools, systems and services for argumentation, *Philosophy and Technology*.
- **(Snaith & Reed, 2016)** *Dialogue Grammar Induction. Studies in Logic and Argumentation, King's College Publication*, pp. 665—681.
- **(Visser et al. 2017)** Visser, Koszowy, Konat, Budzynska, Koszowy & Reed. Straw man and ignoratio elenchi as misuses of rephrase, *2nd European Conference on Argumentation*.
- **(Yaskorska, 2016)** Structures of Dialogue in Debate and Financial Discourse: Modelling an 'Ore' for Argument Mining. *Unpublished PhD thesis, IFiS PAN*.
- **(Yaskorska & Janier, 2016)** Applying Inference Anchoring Theory for the analysis of dialogue structure in debate, *Studies in Logic and Argumentation, King's College Publication*.