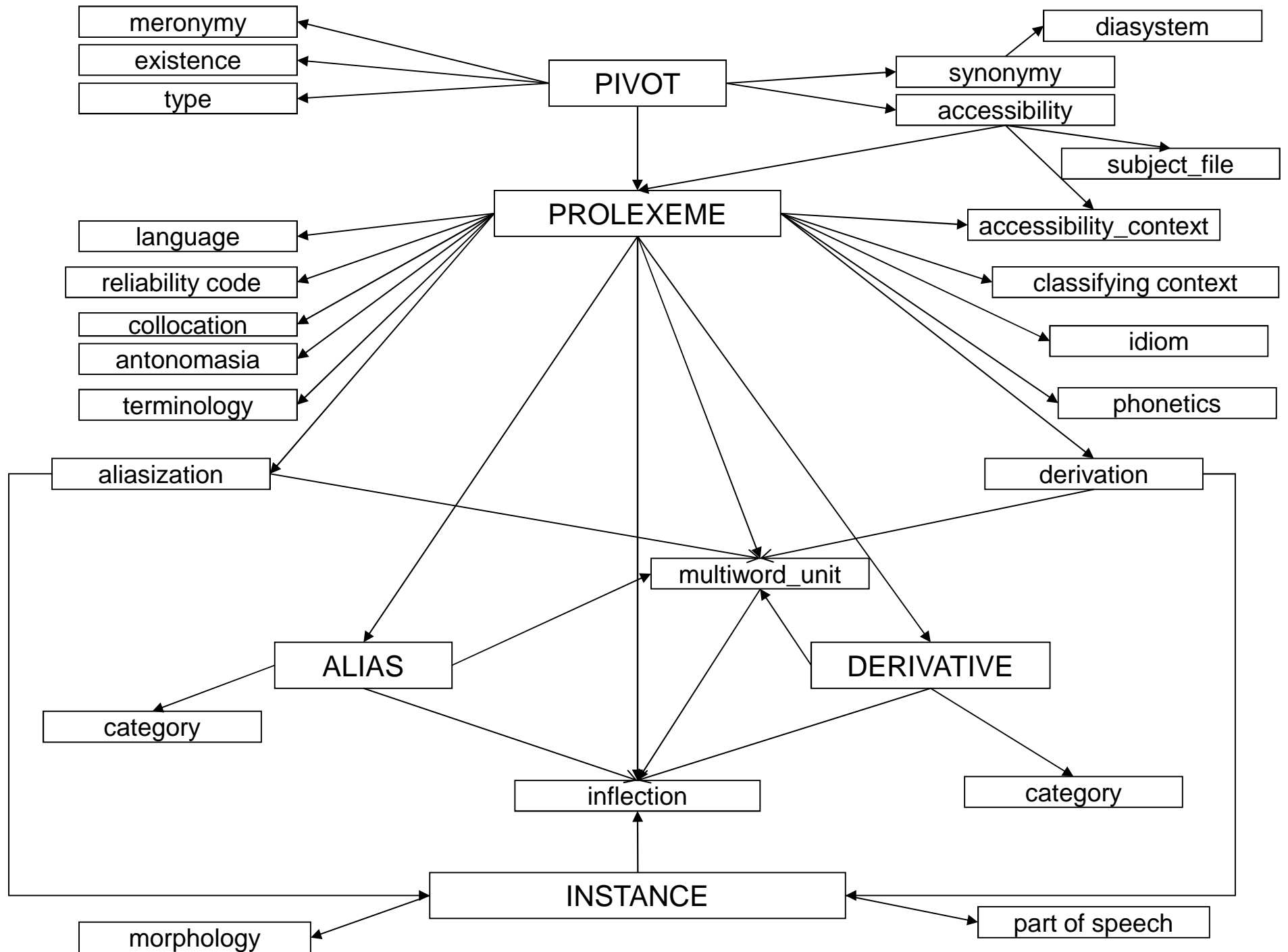


Prolexbase

Schemas



Prolexbase

- 28 language dependent tables
- 15 other tables
 - 9 language independent tables
 - 6 common tables

Prolexbase

- 28 language dependent tables
 - accessibility_iso
 - accessibility_context_iso
 - aliasization_relation_iso
 - aliasization_rule_iso
 - alias_iso
 - antonomasia_iso
 - classifying_context
 - collocation_alias_iso
 - collocation_iso
 - collocation_prolexeme_iso

Prolexbase

- 28 language dependent tables
 - context_iso
 - derivation_relation_iso
 - derivation_rule_iso
 - derivative_iso
 - idiomatic_prolexeme_iso
 - idiom_iso
 - inflexion_iso
 - instance_iso
 - morphology_iso

Prolexbase

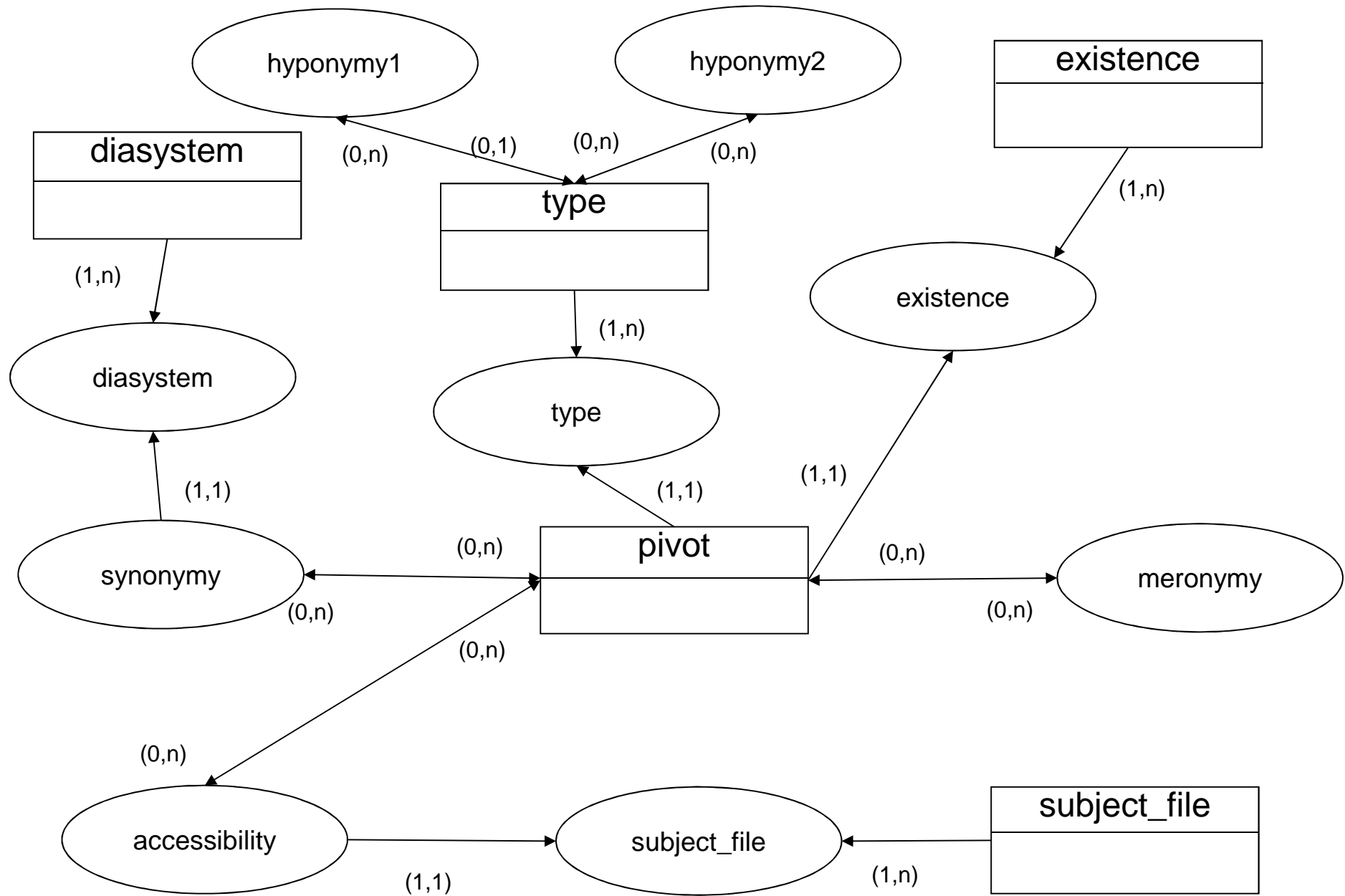
- 28 language dependent tables
 - multiword_alias_iso
 - multiword_derivative_iso
 - multiword_prolexeme_iso
 - multiword_unit_iso
 - phonetics_iso
 - phonetics_prolexeme_iso
 - prolexeme_iso
 - terminological_prolexeme_iso
 - terminology_iso

Prolexbase

- 15 other tables
 - 9 language independent tables
 - accessibility
 - diasystem
 - existence
 - hyponymy2
 - meronymy
 - pivot
 - subject_file
 - synonymy
 - type

Prolexbase

- 15 common tables
 - 6 common tables
 - alias_category
 - collocation_category
 - derivative_category
 - language
 - part_of_speech
 - reliability_code



hyponymy2
NUM_TYPE NUM_SUPERTYPE

diasystem
NUM_DIASYSTEM FRA_DIASYSTEM NOTE ENG_DIASYSTEM

type
NUM_TYPE FRA_TYPE NUM_SUPERTYPE ENG_TYPE NOTE

existence
NUM_EXISTENCE FRA_EXISTENCE NOTE ENG_EXISTENCE

synonymy
NUM_CANONICAL_PIVOT NUM_SYNONYMOUS_PIVOT NUM_DIASYSTEM

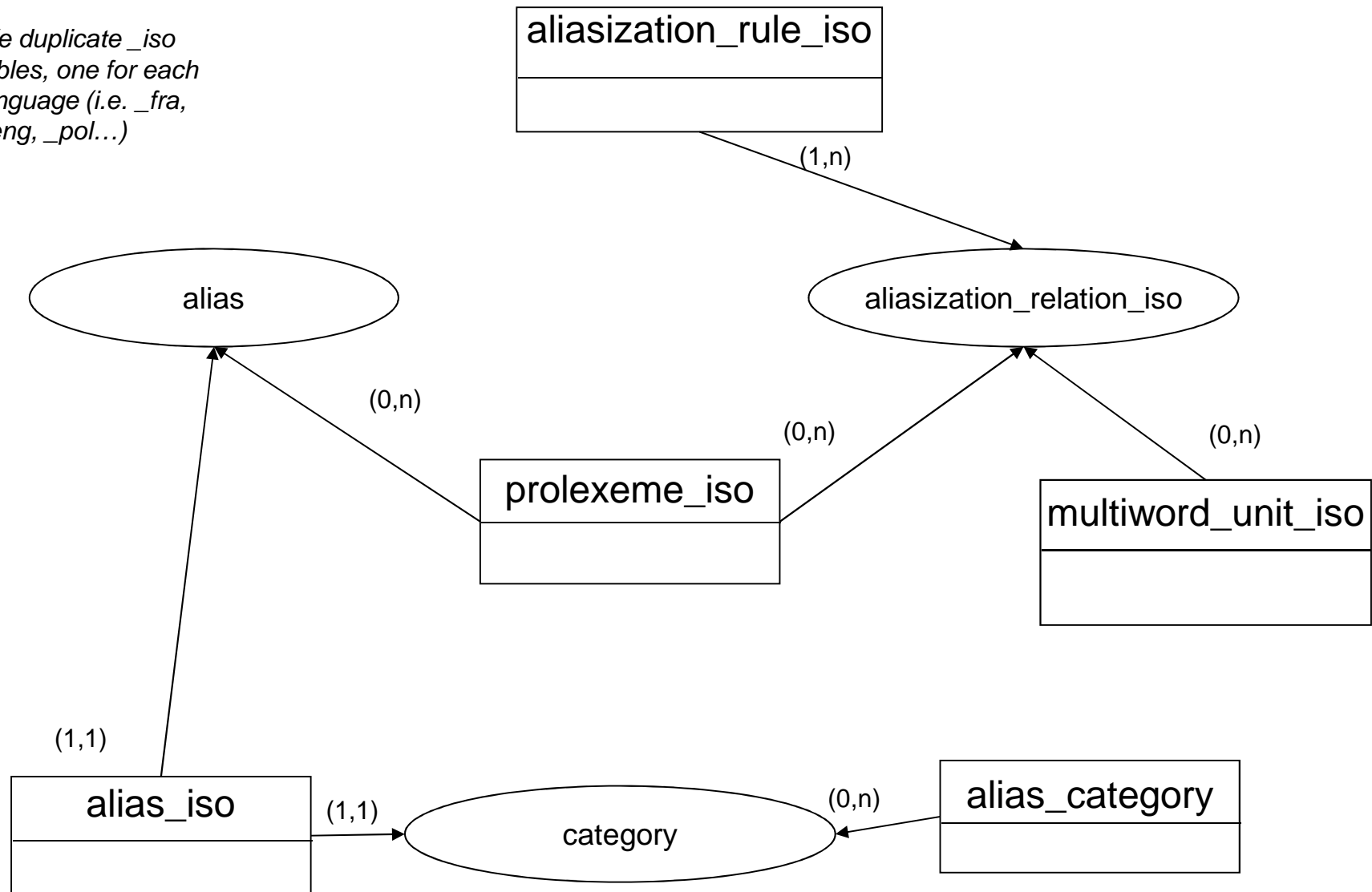
pivot
NUM_PIVOT NUM_TYPE NUM_EXISTENCE

meronymy
NUM_HOLONYMOUS_PIVOT NUM_MERONYMOUS_PIVOT

accessibility
NUM_ACCESSIBILITY NUM_ARGUMENT1_PIVOT NUM_ARGUMENT2_PIVOT NUM_SUBJECTFILE

subject_file
NUM_SUBJECTFILE ENG_SUBJECTFILE FRA_SUBJECTFILE NOTE

*We duplicate _iso
tables, one for each
language (i.e. _fra,
_eng, _pol...)*



prolexeme_iso
NUM_PROLEXEME LABEL_PROLEXEME NUM_PIVOT NUM_INFLEXION SORT ORDER NUM_RELIABILITY

aliasization_relation_iso
NUM_ALIASIZATION NUM_PROLEXEME NUM_MULTIWORD

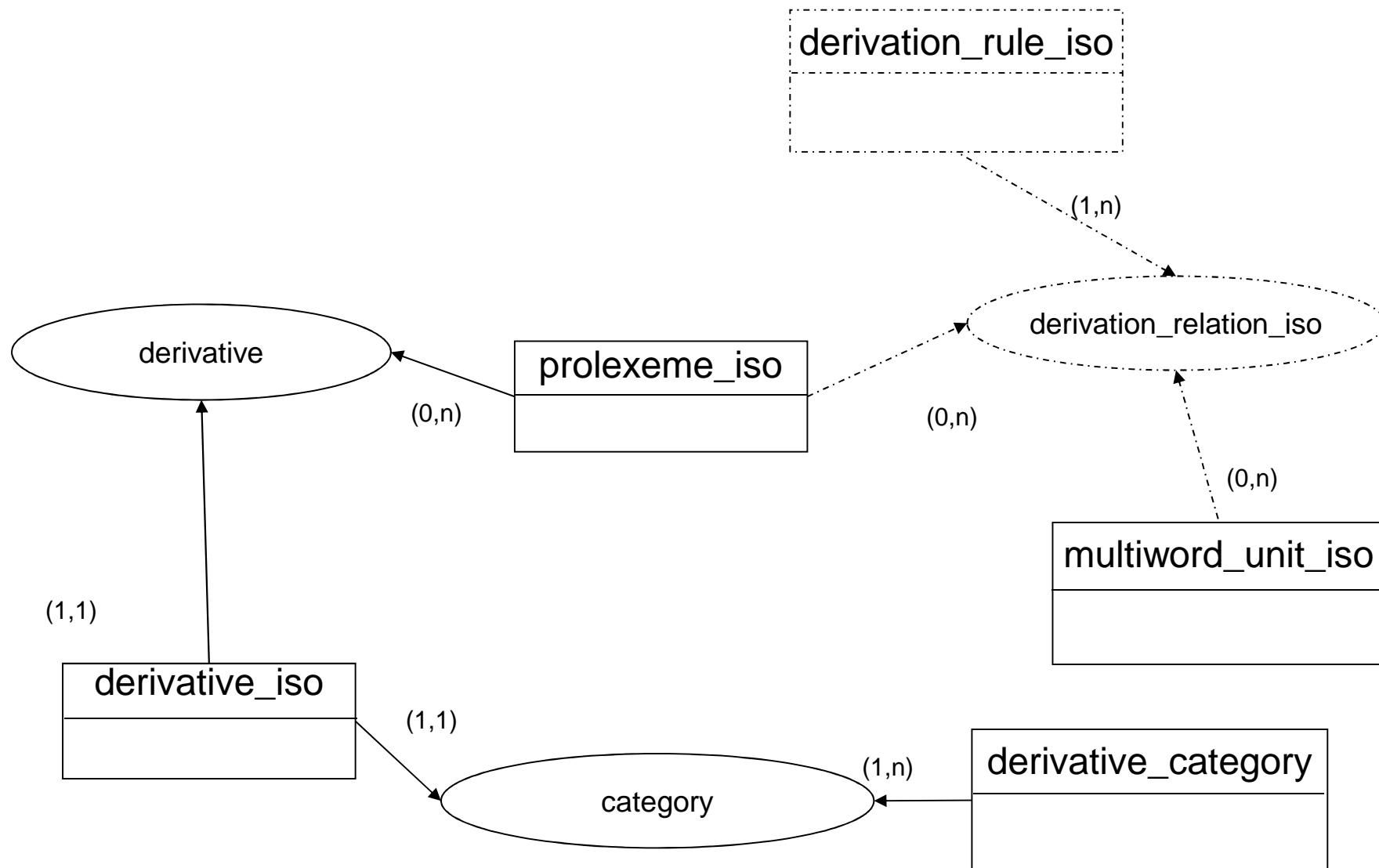
alias_iso
NUM_ALIAS LABEL_ALIAS NUM_PROLEXEME NUM_INFLEXION NUM_CATEGORY

aliasization_rule_iso
NUM_ALIASIZATION LABEL_ALIASIZATION NOTE NUM_TYPE

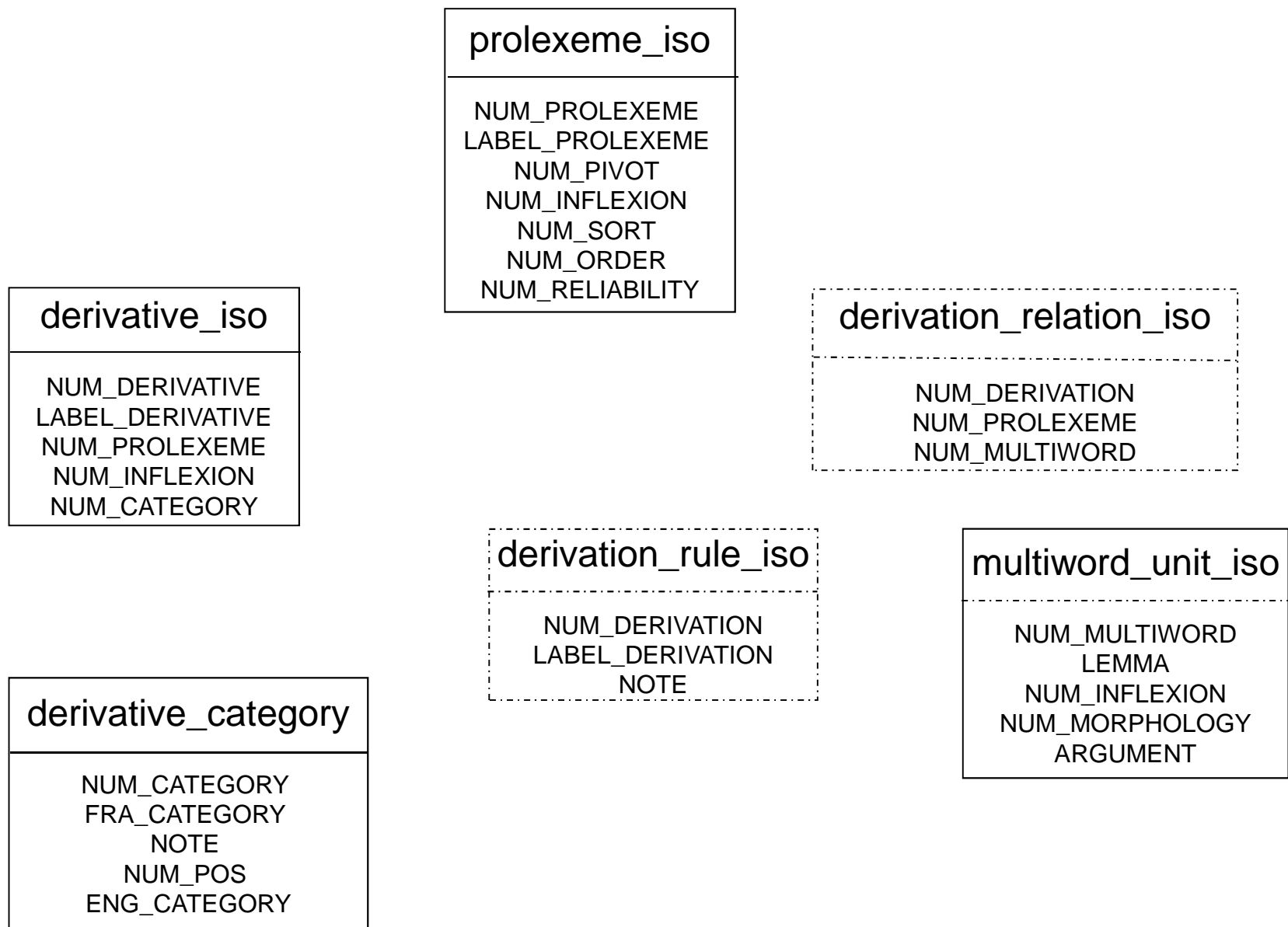
multiword_unit_iso
NUM_MULTIWORD LEMMA NUM_INFLEXION NUM_MORPHOLOGY ARGUMENT

alias_category
NUM_CATEGORY FRA_CATEGORY NOTE ENG_CATEGORY

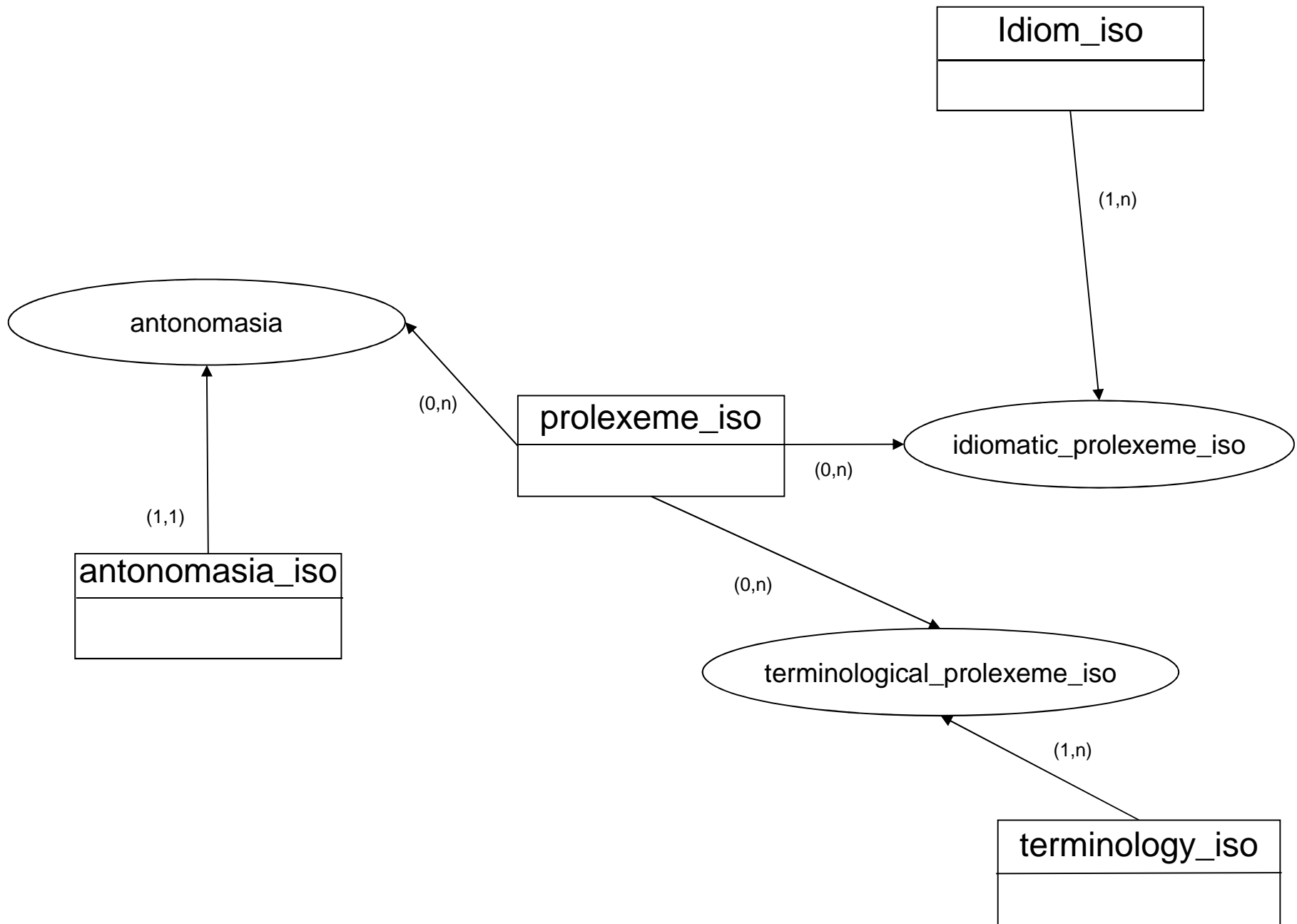
type
NUM_TYPE FRA_TYPE NUM_SUPERTYPE ENG_TYPE NOTE



----- Not used yet



----- Not used yet



idiomatic_prolexeme_iso
NUM_IDIOM NUM_PROLEXEME

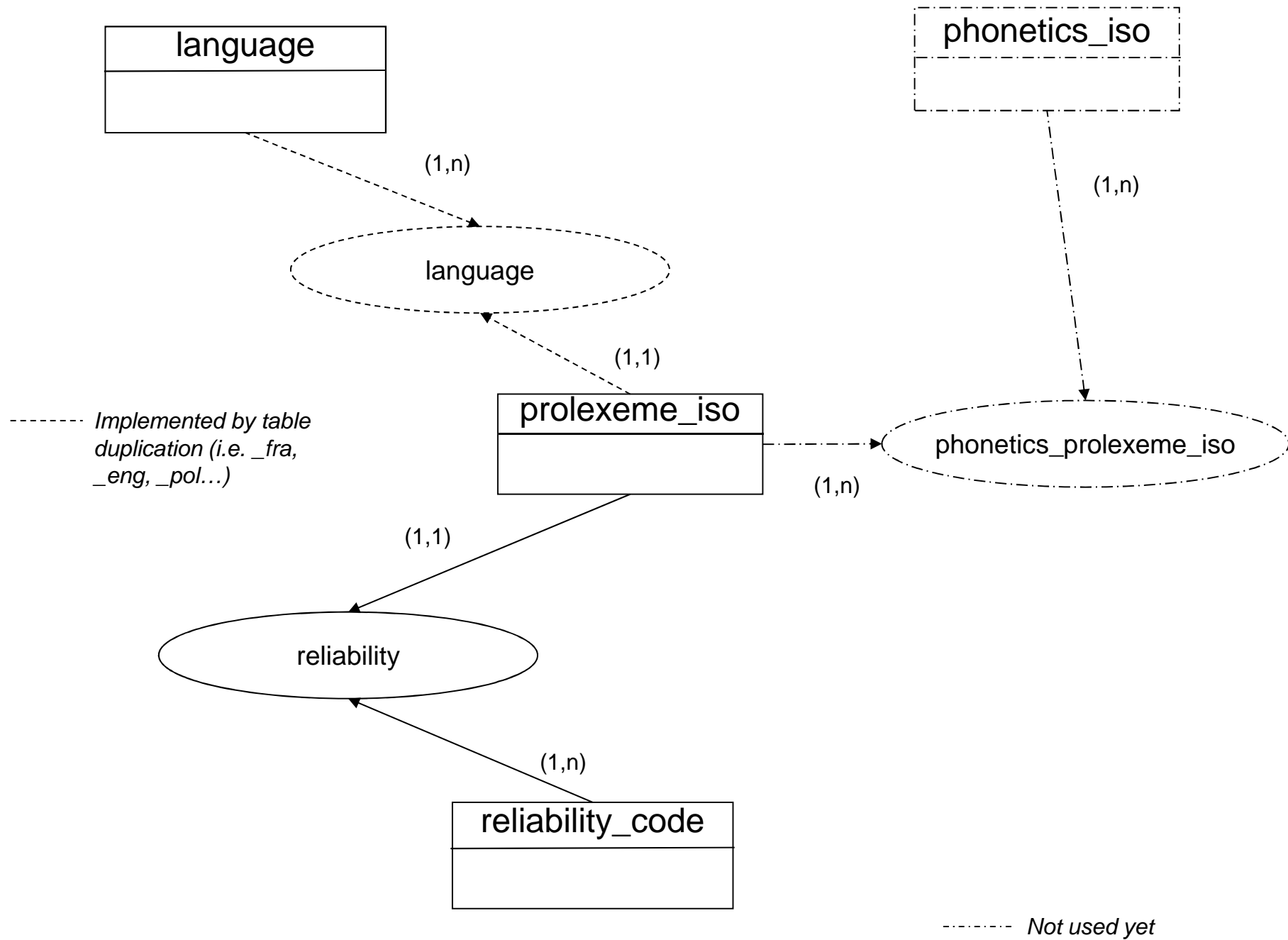
prolexeme_iso
NUM_PROLEXEME LABEL_PROLEXEME NUM_PIVOT NUM_INFLEXION SORT ORDER NUM_RELIABILITY

terminological_prolexeme_iso
NUM_TERMINOLOGY NUM_PROLEXEME

idiom_iso
NUM_IDIOM LABEL_IDIOM

antonomasia_iso
NUM_ANTONOMASIA LABEL_ANTONOMASIA NUM_PROLEXEME

terminology_iso
NUM_TERMINOLOGY LABEL_TERMINOLOGY



language
NUM_LANGUAGE FRA_LANGUAGE CODE_ISO ENG_LANGUAGE

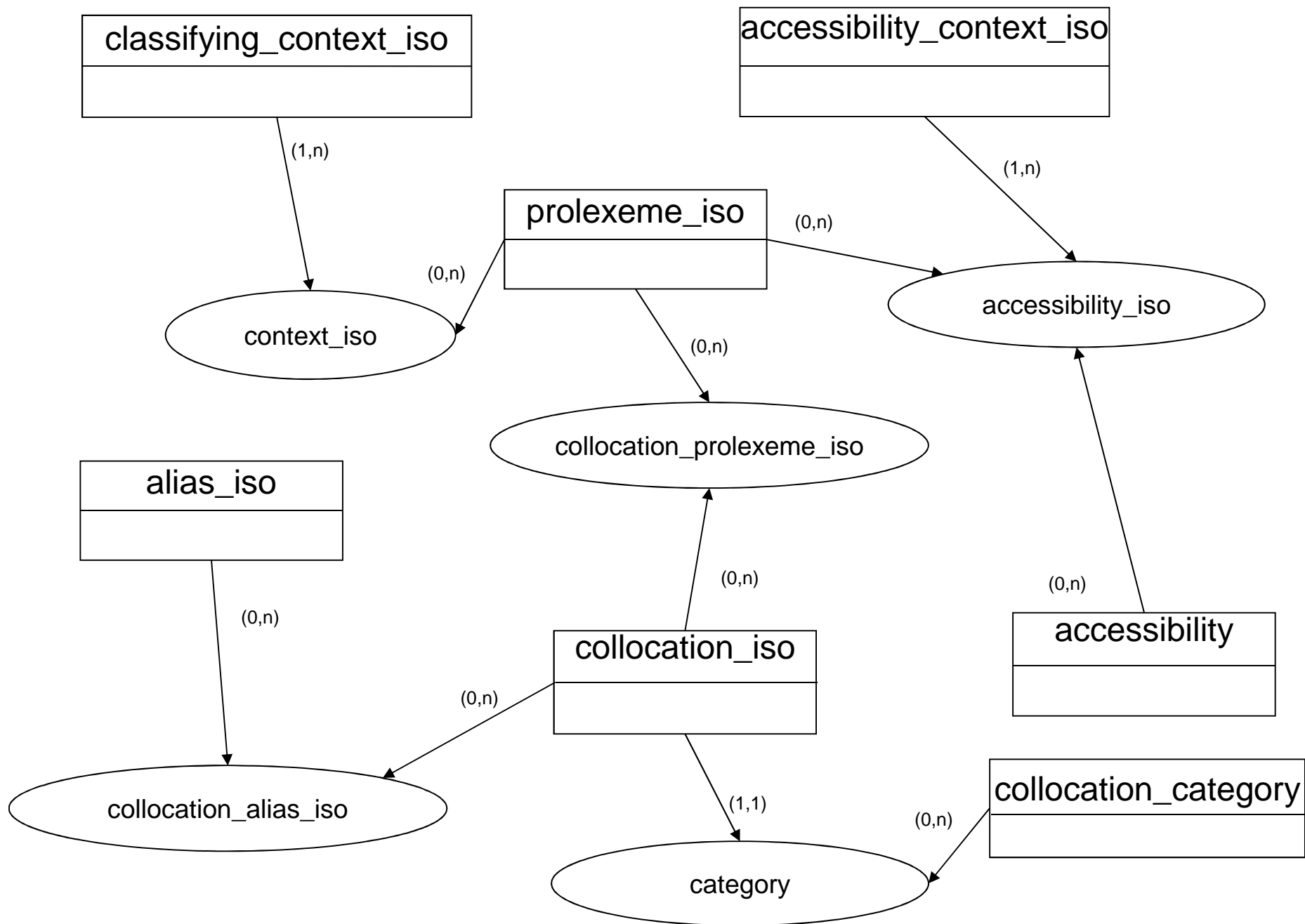
reliability_code
NUM_RELIABILITY FRA_RELIABILITY NOTE ENG_RELIABILITY

prolexeme_iso
NUM_PROLEXEME LABEL_PROLEXEME NUM_PIVOT NUM_INFLEXION NUM_SORT NUM_ORDER NUM_RELIABILITY

phonetics_prolexeme_iso
NUM_PHONETICS NUM_PROLEXEME

phonetics_iso
NUM_PHONETICS LABEL_PHONETICS

----- Not implemented yet



prolexeme_iso
NUM_PROLEXEME LABEL_PROLEXEME

collocation_prolexeme_iso
NUM_COLLOCATION NUM_PROLEXEME

accessibility
NUM_ACCESSIBILITY NUM_ARGUMENT1_PIVOT NUM_ARGUMENT2_PIVOT NUM_SUBJECTFILE

context_iso
NUM_CLASSIFYING_CONTEXT NUM_PROLEXEME

collocation_iso
NUM_COLLOCATION LABEL_COLLOCATION NUM_CATEGORY

accessibility_iso
NUM_ACCESSIBILITY_CONTEXT NUM_PROLEXEME NUM_ACCESSIBILITY

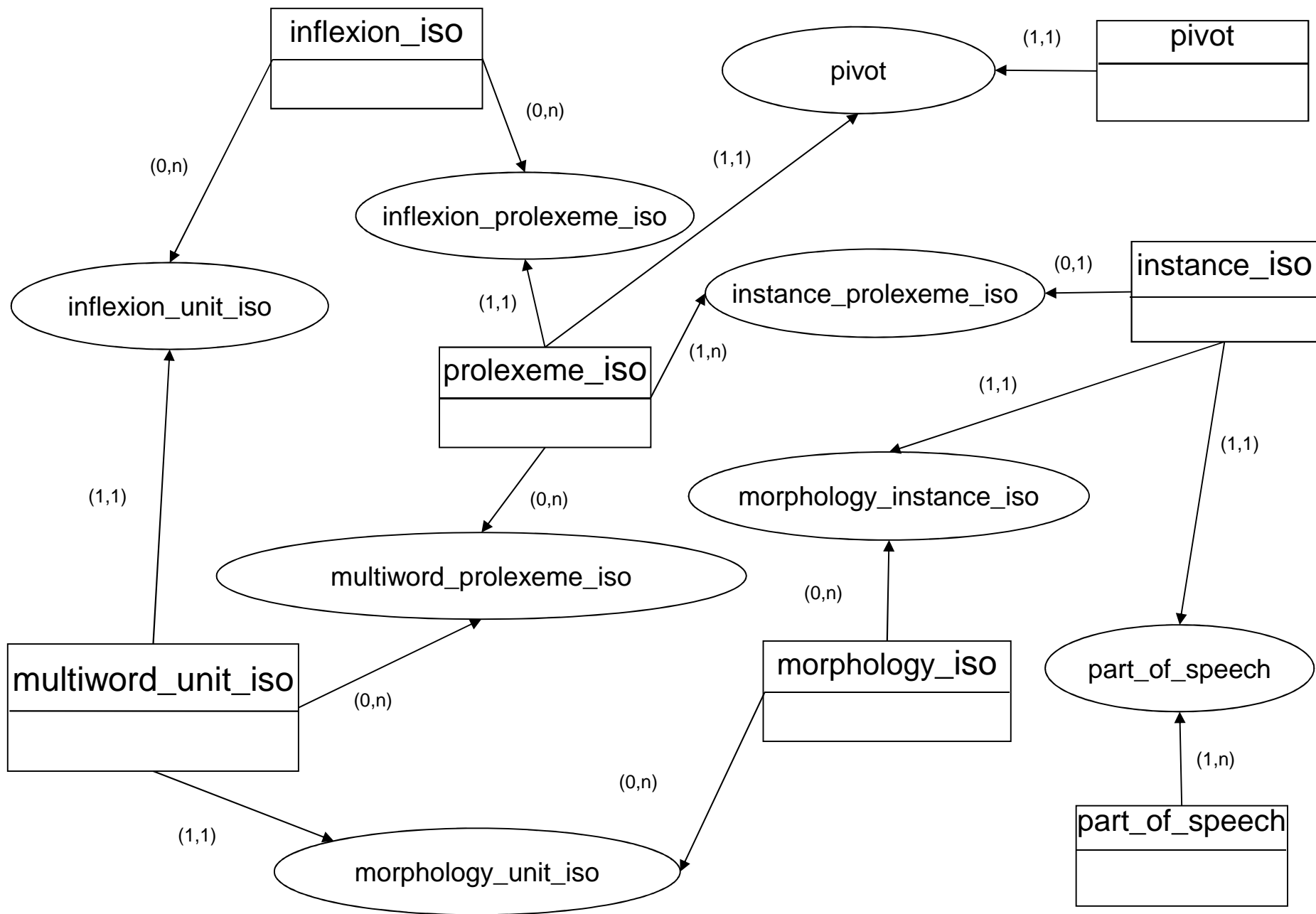
classifying_context_iso
NUM_CLASSIFYING_CONTEXT LABEL_CLASSIFYING_CONTEXT

collocation_category
NUM_CATEGORY FRA_CATEGORY ENG_CATEGORY NOTE

collocation_alias_iso
NUM_COLLOCATION NUM_ALIAS

alias_iso
NUM_ALIAS LABEL_ALIAS NUM_PROLEXEME NUM_INFLEXION NUM_CATEGORY

accessibility_context_iso
NUM_ACCESSIBILITY_CONTEXT LABEL_ACCESSIBILITY_CONTEXT NUM_MORPHOLOGY



inflexion_iso
NUM_INFLEXION LABEL_INFLEXION NOTE

prolexeme_iso
NUM_PROLEXEME LABEL_PROLEXEME NUM_PIVOT NUM_INFLEXION NUM_SORT NUM_ORDER NUM_RELIABILITY

pivot
NUM_PIVOT NUM_TYPE NUM_EXISTENCE

instance_iso
NUM_INSTANCE LABEL_INSTANCE NUM_MORPHOLOGIE NUM_POS NUM_PIVOT NUM_PROLEXEME NUM_DERIVATIVE NUM_ALIAS

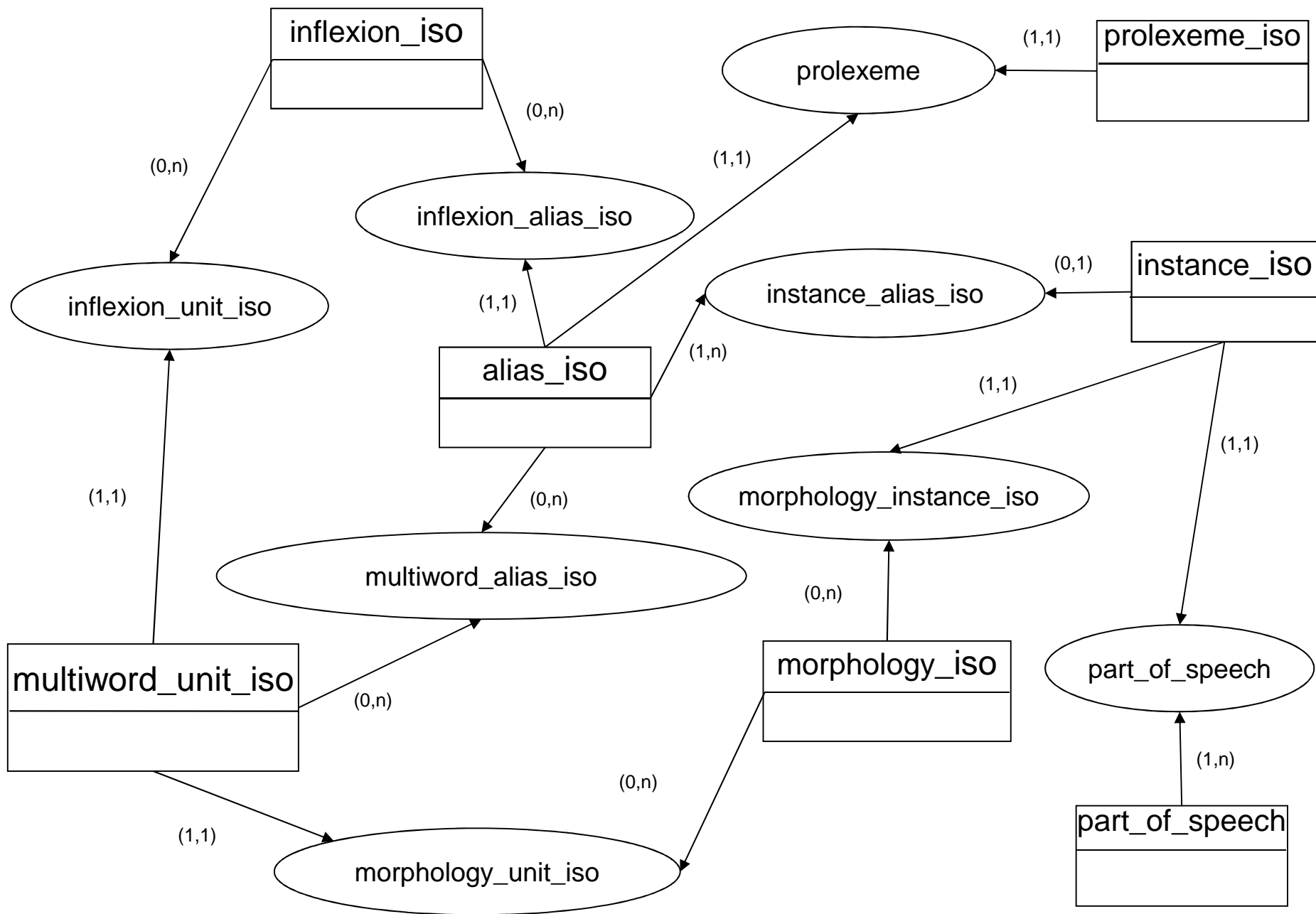
multiword_prolexeme_iso
NUM_MULTIWORD NUM_PROLEXEME

part_of_speech
NUM_POS FRA_POS ENG_POS

morphology_iso
NUM_MORPHOLOGY CASE TAM PERSON ABBREVIATION GENDER NUMBER

multiword_unit_iso
NUM_MULTIWORD LEMMA NUM_INFLEXION NUM_MORPHOLOGY ARGUMENT

TAM: Tense, Aspect, Mood



inflexion_iso
NUM_INFLEXION LABEL_INFLEXION NOTE

alias_iso
NUM_ALIAS LABEL_ALIAS NUM_PROLEXEME NUM_INFLEXION NUM_CATEGORY

prolexeme_iso
NUM_PROLEXEME LABEL_PROLEXEME NUM_PIVOT NUM_INFLEXION NUM_SORT NUM_ORDER NUM_RELIABILITY

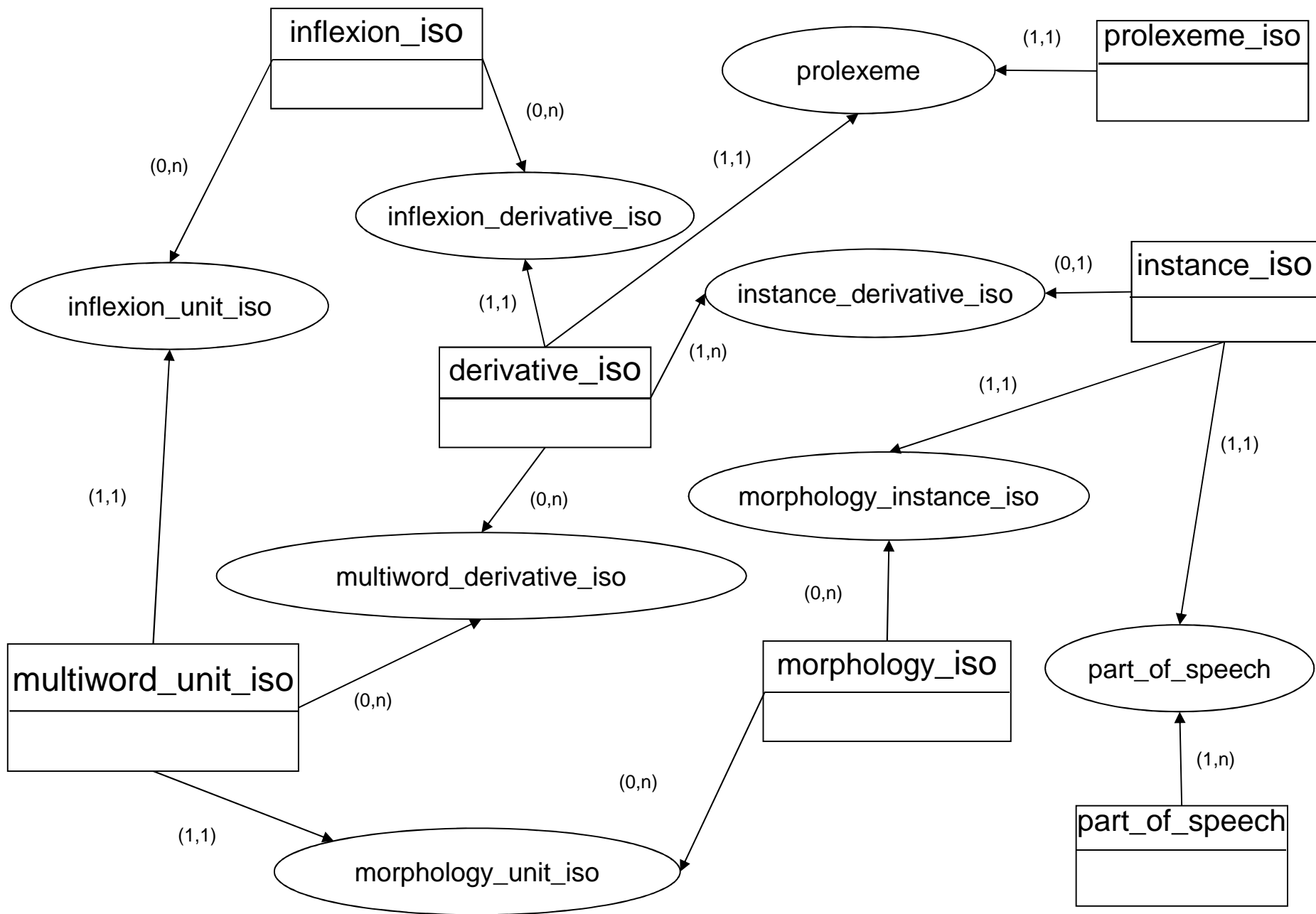
instance_iso
NUM_INSTANCE LABEL_INSTANCE NUM_MORPHOLOGIE NUM_POS NUM_PIVOT NUM_PROLEXEME NUM_DERIVATIVE NUM_ALIAS

multiword_alias_iso
NUM_MULTIWORD NUM_ALIAS

part_of_speech
NUM_POS FRA_POS ENG_POS

morphology_iso
NUM_MORPHOLOGY CASE TAM PERSON ABBREVIATION GENDER NUMBER

multiword_unit_iso
NUM_MULTIWORD LEMMA NUM_INFLEXION NUM_MORPHOLOGY ARGUMENT



inflexion_iso
NUM_INFLEXION LABEL_INFLEXION NOTE

derivative_iso
NUM_DERIVATIVE LABEL_DERIVATIVE NUM_PROLEXEME NUM_INFLEXION NUM_CATEGORY

prolexeme_iso
NUM_PROLEXEME LABEL_PROLEXEME NUM_PIVOT NUM_INFLEXION NUM_SORT NUM_ORDER NUM_RELIABILITY

instance_iso
NUM_INSTANCE LABEL_INSTANCE NUM_MORPHOLOGIE NUM_POS NUM_PIVOT NUM_PROLEXEME NUM_DERIVATIVE NUM_ALIAS

multiword_derivative_iso
NUM_MULTIWORD NUM_DERIVATIVE

part_of_speech
NUM_POS FRA_POS ENG_POS

morphology_iso
NUM_MORPHOLOGY CASE TAM PERSON ABBREVIATION GENDER NUMBER

multiword_unit_iso
NUM_MULTIWORD LEMMA NUM_INFLEXION NUM_MORPHOLOGY ARGUMENT